

Machine Handles & Knobs

**HANDLED with Care
from UNITED**



UNECON SPOKED
HAND WHEELS Pg J10



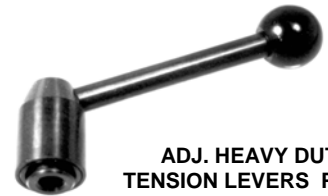
CAST IRON MACHINE
HAND WHEELS Pg J8



3-SPOKED NYLON PLASTIC
HAND WHEELS Pg J11



ADJ. RELEASE-ENGAGE
TAPPED HANDLES Pg J20



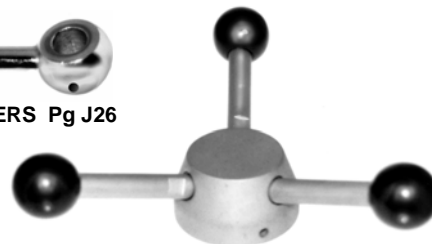
ADJ. HEAVY DUTY
TENSION LEVERS Pg J29



ADJ. REVOLVING HANDLES Pg J13



STEEL CLAMP LEVERS Pg J26



TRIPLE HANDLE HEAVY DUTY LEVERS
Pg J28



TAPERED
TAPPED OVAL
KNOBS Pg J35



ROUND BALL KNOB LEVERS Pg J27



KNURLED STEEL
KNOBS Pg J4



ADJ. CLAMPING LEVERS Pg J22



STAR KNOBS Pg J34



STEEL HANDLES Pg J8



T-KNOBS Pg J34



ADJ. LIFT HANDLES Pg J6



LIFT HANDLES Pg J6



SPEED BALL BALANCED
CRANK HANDLES Pg J17



BAR KNOBS Pg J4



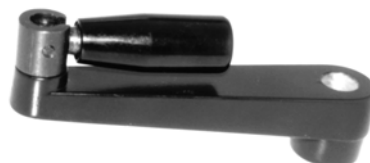
SPEED ROLL FINGER WHEELS Pg J7



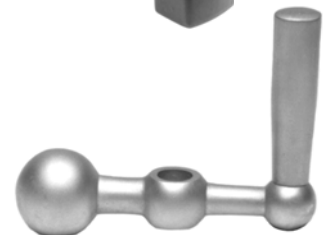
RECTANGULAR PULL
HANDLES Pg J19



REVOLVING CRANK HANDLES Pg J18



FOLDABLE REVOLVING
CRANK HANDLES Pg J18

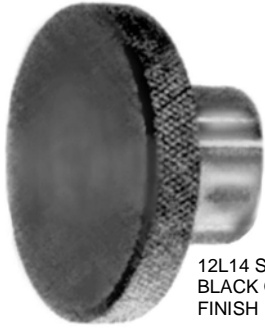


BALANCED FIXED
CRANK HANDLES Pg J15

**Steel and Stainless
Control Knobs**

Knurled Control Knobs Blank, Reamed & Tapped In Steel and Stainless

KNURLED STEEL CONTROL KNOBS



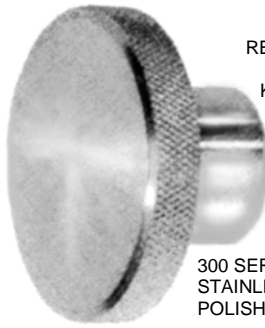
12L14 STEEL
BLACK OXIDE
FINISH

AVAILABLE IN
STEEL and
STAINLESS.

ADD SUFFIX 'S'
to Part No. for
STAINLESS.

STD &
METRIC

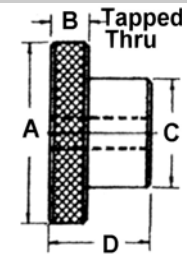
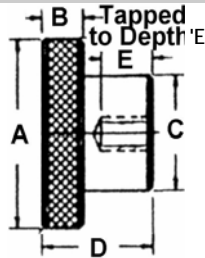
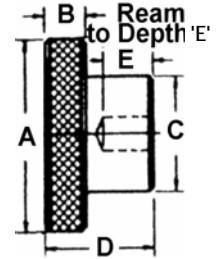
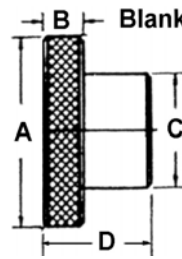
KNURLED STAINLESS CONTROL KNOBS



300 SERIES
STAINLESS
POLISHED FACE

REFER TO I-18
FOR THESE
KNOBS WITH
THREADED
SPINDLES.

FOUR STYLES: BLANK, REAMED to DEPTH, TAPPED to DEPTH and TAPPED THRU.



Each Knob is carefully machined with a knurled non-slip grip.
Stainless Steel Knobs and Threads are non-corrosive.

Your threaded spindle should be assembled and held firmly in the
flanged head with a spring pin.

**UNITED Precision Knobs are accurate and durable. They are ideal
when plastic knobs won't do the job.**

BLANK NO HOLE	REAMED TO DEPTH	TAPPED TO DEPTH	TAPPED THRU	STD Or METRIC	A HD DIA	B FLANGE WIDTH	C HUB DIA	D OVER ALL LEN	E REAM to DEPTH	F THD TAPPED to DEPTH	F THD TAPPED THRU
UCC-933050	UCC-933051	UCC-933052	UCC-933053	USA	3/4	1/4	1/2	5/8	3/16x3/8	10-24x3/8	10-24x5/8
UCC-933050M	UCC-933051M	UCC-933052M	UCC-933053M	METRIC	19.0MM	6.4MM	12.7MM	15.9MM	4.8MMx9.5MM	M5x9.5MM	M5x15.9MM
UCC-933054	UCC-933055	UCC-933056	UCC-9330057	USA	3/4	1/4	1/2	5/8	1/4x3/8	1/4-20x3/8	1/4-20x5/8
UCC-933054M	UCC-933055M	UCC-933056M	UCC-9330057M	METRIC	19.0MM	6.4MM	12.7MM	15.9MM	6.4MMx9.5MM	M6x9.5MM	M6x15.9MM
UCC-933058	UCC-933059	UCC-933060	UCC-933061	USA	1	1/4	5/8	3/4	1/4x1/2	1/4-20x1/2	1/4-20x5/8
UCC-933058M	UCC-933059M	UCC-933060M	UCC-933061M	METRIC	25.4MM	6.4MM	15.9MM	19.0MM	6.4MMx12.7MM	M6x12.7MM	M6x15.9MM
UCC-933062	UCC-933063	UCC-933064	UCC-933065	USA	1	1/4	5/8	3/4	5/16x1/2	5/16-18x1/2	5/16-18x5/8
UCC-933062M	UCC-933063M	UCC-933064M	UCC-933065M	METRIC	25.4MM	6.4MM	15.9MM	19.0MM	7.9MMx12.7MM	M8x12.7MM	M8x15.9MM
UCC-933066	UCC-933067	UCC-933068	UCC-933069	USA	1-1/2	5/16	3/4	1	5/16x5/8	5/16-18x5/8	5/16-18x1
UCC-933066M	UCC-933067M	UCC-933068M	UCC-933069M	METRIC	38.1MM	7.9MM	19.0MM	25.4MM	7.9MMx15.9MM	M8x15.9MM	M8x25.4MM
UCC-933070	UCC-933071	UCC-933072	UCC-933073	USA	1-1/2	5/16	3/4	1	3/8x5/8	3/8-16x5/8	3/8-16x1
UCC-933070M	UCC-933071M	UCC-933072M	UCC-933073M	METRIC	38.1MM	7.9MM	19.0MM	25.4MM	9.5MMx15.9MM	M10x15.9MM	M10x25.4MM
UCC-933074	UCC-933075	UCC-933076	UCC-933077	USA	2	3/8	1	1-1/8	3/8x5/8	3/8-16x5/8	3/8-16x1-1/8
UCC-933074M	UCC-933075M	UCC-933076M	UCC-933077M	METRIC	50.8MM	9.5MM	25.4MM	28.6MM	9.5MMx15.9MM	M10x15.9MM	M10x28.6MM
UCC-933078	UCC-933079	UCC-933080	UCC-933081	USA	2	3/8	1	1-1/8	1/2x5/8	1/2-13x5/8	1/2-13x1-1/8
UCC-933078M	UCC-933079M	UCC-933080M	UCC-933081M	METRIC	50.8MM	9.5MM	25.4MM	28.6MM	12.7MMx15.9MM	M12x15.9MM	M12x28.6MM
UCC-933082	UCC-933083	UCC-933084	UCC-933085	USA	2-1/2	9/16	1-1/2	1-1/2	1/2x3/4	1/2-13x3/4	1/2-13x1-1/2
UCC-933082M	UCC-933083M	UCC-933084M	UCC-933085M	METRIC	63.5MM	14.3MM	38.1MM	38.1MM	12.7MMx19.0MM	M12x19.0MM	M12x38.1MM
UCC-933086	UCC-933087	UCC-933088	UCC-933089	USA	2-1/2	9/16	1-1/2	1-1/2	5/8x3/4	5/8-11x3/4	5/8-11x1-1/2
UCC-933086M	UCC-933087M	UCC-933088M	UCC-933089M	METRIC	63.5MM	14.3MM	38.1MM	38.1MM	15.9MMx19.0MM	M16x19.0MM	M16x38.1MM
UCC-933090	UCC-933091	UCC-933092	UCC-933093	USA	2-5/8	5/8	1-5/8	1-5/8	5/8x1	5/8-11x1	5/8-11x1-5/8
UCC-933090M	UCC-933091M	UCC-933092M	UCC-933093M	METRIC	66.7MM	15.9MM	41.3MM	41.3MM	15.9MMx25.4MM	M16x25.4MM	M16x41.3MM
UCC-933094	UCC-933095	UCC-933096	UCC-933097	USA	2-5/8	5/8	1-5/8	1-5/8	3/4x1	3/4-10x1	3/4-10x1-5/8
UCC-933094M	UCC-933095M	UCC-933096M	UCC-933097M	METRIC	66.7MM	15.9MM	41.3MM	41.3MM	19.0MMx25.4MM	M20x25.4MM	M20x41.3MM

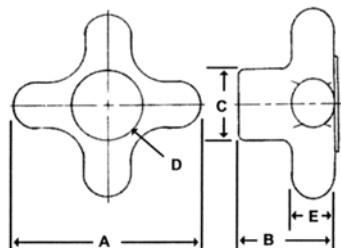
Hand Knobs

Cast Iron & Aluminum Alloy

**Heavy Duty
Hand Knobs**

UnEcon Cast Iron Hand Knobs — INCH & METRIC SIZES

CAST IRON	A	B	C HUB	D HOLE STYLE	E
UDB-945500	1-1/8	5/8	5/8	BLANK	5/16
UDB-945505	1-1/8	5/8	5/8	10-32 TAP	5/16
UDB-945510	1-1/8	5/8	5/8	10-24 TAP	5/16
UDB-945515	1-1/8	5/8	5/8	3/16 REAM	5/16
UDB-945525	1-1/8	5/8	5/8	1/4 - 20 TAP x 1/2 DP	5/16
UDB-945530	1-1/8	5/8	5/8	1/4 REAM x 1/2 DP	5/16
UDB-945531	1-1/8	5/8	5/8	M6 TAP THRU	5/16
UDB-945532	1-1/8	5/8	5/8	M6 TAP x 1/2 DP	5/16
UDB-945533	1-1/8	5/8	5/8	6MM REAM x 1/2 DP	5/16
UDB-945540	1-1/2	7/8	3/4	1/4 - 20 TAP THRU	3/8
UDB-945541	1-1/2	7/8	3/4	1/4 - 20 TAP x 3/4 DP	3/8
UDB-945542	1-1/2	7/8	3/4	1/4 REAM x 3/4 DP	3/8
UDB-945550	1-1/2	7/8	3/4	BLANK	3/8
UDB-945555	1-1/2	7/8	3/4	5/16 - 18 TAP x 3/4 DP	3/8
UDB-945556	1-1/2	7/8	3/4	5/16 - 18 TAP THRU	3/8
UDB-945560	1-1/2	7/8	3/4	5/16 REAM x 3/4 DP	3/8
UDB-945575	2"	1-1/8	3/4	BLANK	1/2
UDB-945580	2"	1-1/8	3/4	5/16 REAM x 3/4 DP	1/2
UDB-945581	2"	1-1/8	3/4	5/16 - 18 TAP x 3/4 DP	1/2
UDB-945582	2"	1-1/8	3/4	5/16 - 18 TAP THRU	1/2
UDB-945585	2"	1-1/8	3/4	3/8 REAM x 7/8 DP	1/2
UDB-945586	2"	1-1/8	3/4	3/8 - 16 TAP THRU	1/2
UDB-945590	2"	1-1/8	3/4	3/8 - 16 TAP x 7/8 DP	1/2
UDB-945591	2"	1-1/8	3/4	1/2 - 13 TAP THRU	1/2
UDB-945592	2"	1-1/8	3/4	1/2 - 13 TAP x 7/8 DP	1/2
UDB-945593	2"	1-1/8	3/4	1/2 REAM x 7/8 DP	1/2
UDB-945594	2"	1-1/8	3/4	M10 TAP THRU	1/2
UDB-945595	2"	1-1/8	3/4	M10 TAP x 7/8 DP	1/2
UDB-945596	2"	1-1/8	3/4	10MM REAM x 7/8 DP	1/2
UDB-945597	2"	1-1/8	3/4	M12 TAP THRU	1/2
UDB-945598	2"	1-1/8	3/4	M12 TAP x 7/8 DP	1/2
UDB-945599	2"	1-1/8	3/4	12MM REAM x 7/8 DP	1/2
UDB-945615	2-1/2	1-1/2	1-1/8	BLANK	1/2
UDB-945620	2-1/2	1-1/2	1-1/8	3/8 REAM	1/2
UDB-945625	2-1/2	1-1/2	1-1/8	1/2 - 13 TAP x 1-1/4 DP	1/2
UDB-945626	2-1/2	1-1/2	1-1/8	1/2 - 13 TAP THRU	1/2
UDB-945630	2-1/2	1-1/2	1-1/8	1/2 REAM x 1-1/4 DP	1/2
UDB-945635	2-1/2	1-1/2	1-1/8	5/8 - 11 TAP	1/2
UDB-945636	2-1/2	1-1/2	1-1/8	5/8 - 11 TAP THRU	1/2
UDB-945637	2-1/2	1-1/2	1-1/8	5/8 REAM 1-1/4 DP	1/2
UDB-945638	2-1/2	1-1/2	1-1/8	M10 TAP THRU	1/2
UDB-945639	2-1/2	1-1/2	1-1/8	M10 TAP x 1" DP	1/2
UDB-945640	2-1/2	1-1/2	1-1/8	5/8 REAM THRU	1/2
UDB-945641	2-1/2	1-1/2	1-1/8	10MM REAM x 1" DP	1/2
UDB-945642	2-1/2	1-1/2	1-1/8	M12 TAP THRU	1/2
UDB-945643	2-1/2	1-1/2	1-1/8	M12 TAP x 1" DP	1/2
UDB-945644	2-1/2	1-1/2	1-1/8	12MM REAM x 1" DP	1/2
UDB-945645	2-1/2	2-1/4	1"	BLANK	1/2
UDB-945650	2-1/2	2-1/4	1"	1/2 - 13 TAP	1/2
UDB-945651	2-1/2	2-1/4	1"	5/8 - 11 TAP THRU	1/2
UDB-945652	2-1/2	2-1/4	1"	5/8 - 11 TAP x 1-1/8 DP	1/2
UDB-945653	2-1/2	2-1/4	1"	5/8 REAM x 1-1/8 DP	1/2
UDB-945654	2-1/2	2-1/4	1"	3/4-10 TAP THRU	1/2
UDB-945655	2-1/2	2-1/4	1"	3/4-10 TAP x 1-1/8 DP	1/2
UDB-945656	2-1/2	2-1/4	1"	3/4 REAM x 1-1/8 DP	1/2
UDB-945657	2-1/2	2-1/4	1"	M16 TAP THRU	1/2
UDB-945658	2-1/2	2-1/4	1"	M16 TAP x 1-1/8 DP	1/2
UDB-945659	2-1/2	2-1/4	1"	16MM REAM x 1-1/8 DP	1/2
UDB-945660	2-1/2	2-1/4	1"	M20 TAP x 1-1/8 DP	1/2
UDB-945661	2-1/2	2-1/4	1"	20MM REAM x 1-1/8 DP	1/2



BRIGHT ZINC PLATED CAST IRON



Classic HAND KNOBS are cast from fine grain Iron and Zinc Plated for protection. Or choose from our Aluminum Alloy Hand Knobs.

Select from five knob sizes with Hole Styles: Blank, Tapped, Tapped Thru and Reamed in both Metric and Inch sizes.

UnEcon Aluminum Hand Knobs — INCH SIZES						
ALUMINUM	A	B	C	D Ream	D Tap	E
UDB-945665	1-1/8	3/4	9/16		1/4 - 20	3/8
UDB-945666	1-1/8	3/4	9/16	1/4		3/8
UDB-945667	1-1/8	3/4	9/16	BLANK		3/8
UDB-945668	1-1/2	7/8	5/8		5/16 - 18	3/8
UDB-945669	1-1/2	7/8	5/8	5/16		3/8
UDB-945670	1-1/2	7/8	5/8	BLANK		3/8
UDB-945671	2"	7/8	3/4		3/8 - 16	3/8
UDB-945672	2"	7/8	3/4	5/16		3/8
UDB-945673	2"	1-1/8	3/4	3/8		3/8
UDB-945674	2"	1-1/8	3/4	BLANK		3/8
UDB-945677	2-1/2	1-1/2	1-1/8		1/2 - 13	1/2
UDB-945678	2-1/2	1-1/2	1-1/8	1/2		1/2
UDB-945679	2-1/2	1-1/2	1-1/8		5/8 - 11	1/2
UDB-945680	2-1/2	1-1/2	1-1/8	5/8		1/2
UDB-945681	2-1/2	1-1/2	1-1/8	3/8		1/2
UDB-945682	2-1/2	1-1/2	1-1/8	BLANK		1/2
UDB-945683	3"	1-3/4	1-1/4		5/8 - 11	1/2
UDB-945684	3"	1-3/4	1-1/4	5/8		1/2
UDB-945685	3"	1-3/4	1-1/4	3/4		1/2
UDB-945686	3"	1-3/4	1-1/4	BLANK		1/2
UDB-945687	3"	1-3/4	1-1/2		3/4 - 10	1/2
UDB-945688	3"	1-3/4	1-1/2	5/8		1/2
UDB-945689	3"	1-3/4	1-1/2	3/4		1/2
UDB-945690	3"	1-3/4	1-1/2	BLANK		1/2

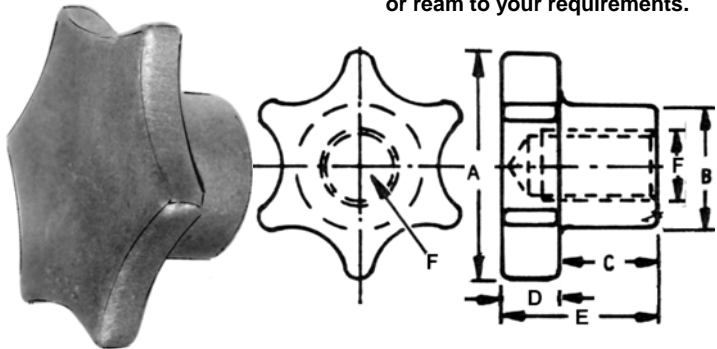
**Star, Knurled
and Bar Knobs**

UNITED Strong Action Knobs

Star — Knurled — Bar Styles

STAR KNOBS

Special reaming and tapping available or select Blanks to tap or ream to your requirements.

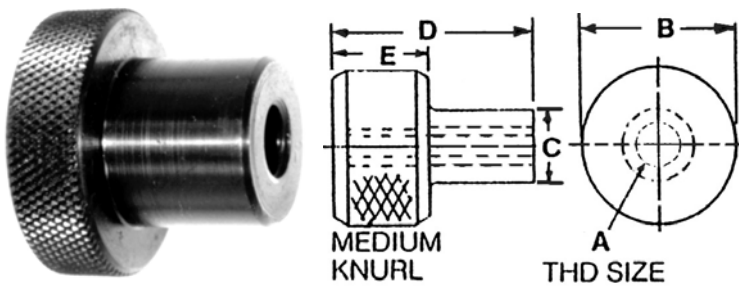


Star Knobs are tumbled smooth. Faces of reamed and threaded knobs are machined square with hole. Available in Cast Iron Zinc Plated with Clear Chromate and in Aluminum Alloy.

CAST IRON	ALUMINUM	A	B	C	D	E	F
UDB-945840	UDB-945860						BLANK
UDB-945841	UDB-945861	1-1/2	7/8	15/16	1/2	1-7/16	.375 RM
UDB-945842	UDB-945862						3/8 - 16 TAP
UDB-945843	UDB-945863						BLANK
UDB-945844	UDB-945864	2"	7/8	1-7/16	1/2	1-15/16	.375 RM
UDB-945845	UDB-945865						3/8 - 16 TAP
UDB-945846	UDB-945866						BLANK
UDB-945847	UDB-945867	2-1/2	1-1/4	11/16	1/2	1-3/16	.500 RM
UDB-945848	UDB-945868						1/2 - 13 TAP
UDB-945849	UDB-945869						BLANK
UDB-945850	UDB-945870						.500 RM
UDB-945851	UDB-945871	3"	1-3/8	1-7/16	1/2	1-15/16	.625 RM
UDB-945852	UDB-945872						1/2 - 13 TAP
UDB-945853	UDB-945873						5/8 - 11 TAP
UDB-945854	UDB-945874						BLANK
UDB-945855	UDB-945875	3-1/2	1-5/8	15/16	1/2	1-7/16	.750 RM
UDB-945856	UDB-945876						3/4 - 10 TAP

KNURLED STEEL KNOBS

Knurled Knobs are excellent for a wide variety of clamping, locating and adjustment applications.

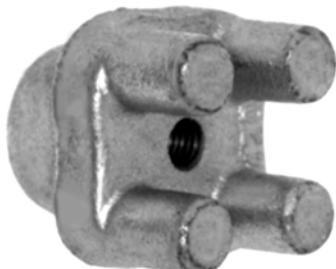


Black Oxide Finish after machining surface to bore.

KNURLED	A	B	C	D	E
UDB-945005	10-24	3/4	7/16	5/8	1/4
UDB-945010	1/4 - 20	1"	5/8	3/4	1/4
UDB-945015	3/8 - 16	1-1/4	3/4	1-1/8	1/2
UDB-945020	1/2 - 13	1-1/2	1"	1-1/4	1/2
UDB-945025	5/8 - 11	2"	1-1/4	1-3/4	5/8
UDB-945030	3/4 - 10	2-1/2	1-1/2	2-1/4	5/8

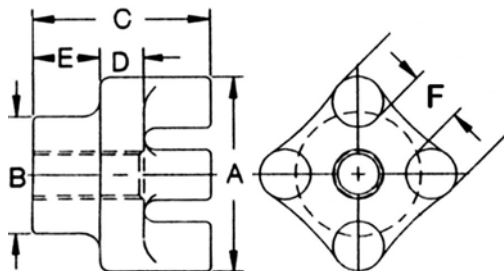
BAR KNOBS

Select from these 3 knob sizes according to the hole conditions.



Bar Knobs can be tightened with a "cheater" bar inserted between the prongs for maximum leverage.

**HEAVY DUTY
HIGH STRENGTH**



Bar Knobs available in Cast Iron Zinc-Plated Clear Chromate Finish

BAR	A	B	C	D	E	F	MOUNTING STYLE
UDB-945725							BLANK
UDB-945727							3/8 - 16 TAP
UDB-945732							1/2 - 13 TAP
UDB-945735	2"	2-1/8	1-1/2	1/2	3/4	7/16	1/2 REAM
UDB-945737							5/8 - 11 TAP
UDB-945739							M10
UDB-945741							M12
UDB-945743							M16
UDB-945750							BLANK
UDB-945755							1/2 - 13 TAP
UDB-945765							5/8 - 11 TAP
UDB-945770							5/8 REAM
UDB-945775	2-1/2	2-3/8	1-3/4	9/16	7/8	5/8	3/4 - 10 TAP
UDB-945780							3/4 REAM
UDB-945782							M12
UDB-945784							M16
UDB-945786							M20
UDB-945788							BLANK
UDB-945790							3/4 - 10 TAP
UDB-945792	3-1/2	2-3/8	2-1/8	9/16	15/16	1-5/16	7/8 - 9 TAP
UDB-945794							1 - 8 TAP
UDB-945796							M20
UDB-945798							M24

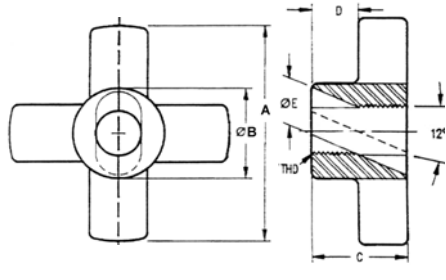
UNITED Quick Action Knobs Plain and Knurled Time Savers



QUICK ACTION HAND KNOBS for clamping, locating and adjustment applications

FOR HEAVY DUTY WORK
Tilt Knob to slide in and out. Straighten to engage threads.

Heavy Duty 4-Prong Knobs — INCH SIZES						
4-Prong Knobs	A	B	C	D	T	F
UDB-945802	1-1/8	9/16	5/8	5/16	1/4 – 20	17/64
UDB-945804	1-1/2	11/16	7/8	1/2	5/16 – 18	21/64
UDB-945806	2"	13/16	1"	1/2	3/8 – 16	25/64
UDB-945808	2-1/2	1"	1-1/8	9/16	1/2 – 13	33/64
UDB-945810	3"	1-1/4	1-1/4	5/8	5/8 – 11	41/64
UDB-945812	3"	1-1/4	1-1/4	5/8	3/4 – 10	49/64

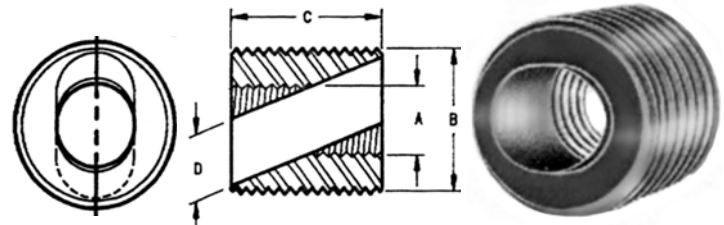


QUICK ACTION KNOBS

QUICK ACTION THREADED INSERTS for use with **KNOBS** and work holes requiring threaded spindles moving in and out.

QUICK ACTION THREADED INSERTS

Quick Action Threaded Inserts — INCH SIZES				
Thd Inserts	A	B	C	D
UDB-945814	1/4 – 20	1/2 – 20	1/2	17/64
UDB-945816	5/16 – 18	5/8 – 18	5/8	21/64
UDB-945818	3/8 – 16	3/4 – 16	3/4	25/64
UDB-945820	1/2 – 13	1" – 14	1"	33/64
UDB-945822	5/8 – 11	1-1/4 – 12	1-1/4	41/64



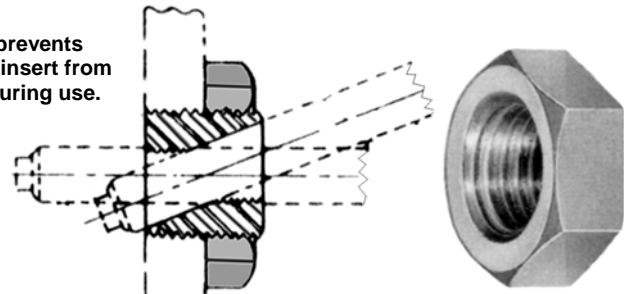
Best to use for work holes requiring threaded spindles moving in and out

QUICK ACTION JAM NUTS hold inserts in place.

QUICK ACTION INSERT JAM NUTS

Quick Action Insert Locking Nuts -INCH SIZES			
Insert Locking Nuts	A	B HEX	C
UDB-945814N	1/2 – 20	3/4	3/16
UDB-945816N	5/8 – 18	1-1/16	1/4
UDB-945818N	3/4 – 16	1-1/8	5/16
UDB-945820N	1" – 14	1-1/2	3/8
UDB-945822N	1-1/4 – 12	1-3/4	7/16

Jam Nut prevents threaded insert from moving during use.

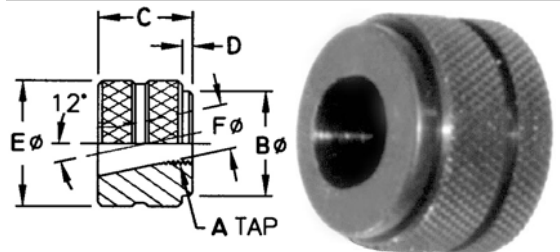


QUICK ACTION KNURLED HAND KNOBS for use in castable tooling

QUICK ACTION KNURLED KNOBS

Quick Action Knurled Knobs — INCH SIZES						
Knurled	A	B	C	D	E	F
UDB-945824	#10 – 24	1/2	7/16	1/16	5/8	7/32
UDB-945825	1/4 – 20	5/8	9/16	1/16	3/4	9/32
UDB-945826	5/16 – 18	3/4	5/8	1/16	7/8	11/32
UDB-945827	3/8 – 16	7/8	3/4	1/8	1"	13/32
UDB-945828	1/2 – 13	1"	3/4	1/8	1-1/8	17/32

Extend stud slightly beyond Quick Action Knob to engage threads.



Quick Action Knurled Knobs — METRIC THD						
UDB-945829	M5	.51	.43	.08	5/8	.23
UDB-945830	M6	.63	.55	.08	3/4	.27
UDB-945831	M8	.75	.63	.08	7/8	.35
UDB-945832	M10	.87	.63	.08	1"	.42
UDB-945833	M12	.98	.75	.12	1-1/8	.50

