

**Eye Bolts  
Plain — Shoulder**

# Plain & Shoulder Eye Bolts

GRAIN SIZE: 5 OR FINER  
YIELD: 30,000 PSI MIN  
REDUCTION OF AREA: 60 % MIN

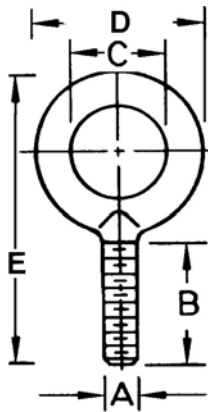
TENSILE: 65,000 PSI MIN  
ELONGATION: 30% MIN

BENT TEST: NO VISIBLE RUPTURES IN UNTHREADED SECTION WHEN BENT TO 45° WITH COMPLETE THREAD ENGAGEMENT.

## PLAIN EYE BOLTS



**C-1030 to ASTM A489  
ANSI / ASME B18.15**



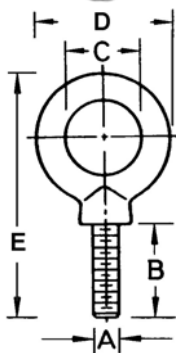
PLAIN STANDARD EYE BOLTS							
UNITED PART NO.	A THD UNC-2A	B SHANK LENGTH	C EYE I. D.	WT. (LB.) PER EA.	D O.D. EYE	E OAL	SAFE WORK LD.
UDB-702001	1/4 - 20	1"	3/4	0.06	1-3/16	2-1/4	500
UDB-702002	5/16 - 18	1-1/8	7/8	0.10	1-7/16	2-5/8	900
UDB-702003	3/8 - 16	1-1/4	1"	0.15	1-21/32	3"	1300
UDB-702004	7/16 - 14	1-3/8	1-1/16	0.21	1-27/32	1-11/16	1800
UDB-702005	1/2 - 13	1-1/2	1-3/16	0.30	2-1/16	3-9/16	2400
UDB-702006	9/16 - 12	1-5/8	1-9/32	0.55	2-9/32	4-1/16	3000
UDB-702007	5/8 - 11	1-3/4	1-3/8	0.61	2-1/2	4-1/4	4000
UDB-702008	3/4 - 10	2"	1-1/2	0.98	2-13/16	4-27/32	5000
UDB-702009	7/8 - 9	2-1/4	1-11/16	1.53	3-1/4	5-5/8	7000
UDB-702010	1 - 8	2-1/2	1-13/16	2.06	3-9/16	6-7/32	9000
UDB-702011	1-1/8 - 7	2-3/4	2"	2.96	4"	6-29/32	12000
UDB-702012	1-1/4 - 7	3"	2-3/16	4.11	4-7/16	7-9/16	15000
UDB-702014	1-1/2 - 6	3-1/2	2-9/16	6.73	5-3/16	8-7/8	21000

- ❶ Do not use Eye Bolts on angular lifts.
- ❷ Always apply Eye Bolt loads in the plane of the eye
- ❸ Seat Shoulder Eye Bolts firmly against material part.
- ❹ Do not exceed safe working load of rated capacity.
- ❺ Fit all Eye Bolts firmly and tightly in the hole and check them.
- ❻ Do not paint or coat Eye Bolts. Inspection is difficult.
- ❼ Engage full thread to obtain capacity rating.
- ❽ Add one half turn to align plane of Eye Bolt.

## SHOULDER EYE BOLTS



**C-1030 to ASTM A489  
ANSI / ASME B18.15  
MS 51937**



THE ACTUAL LOAD A SINGLE EYE BOLT CAN LIFT IS REFERRED TO AS "RIGGERS LOAD."

ENGINEERS CAPACITY IS THE ALLOWABLE TENSION IN THE EYE OF THE LIFTING RIG AS IT IS APPLIED TO THE EYE BOLT. IT IS NECESSARY TO DETERMINE THE TENSION IN EACH RIG LEG BEFORE SIZING THE EYE BOLT.

SHOULDER EYE BOLTS							
UNITED PART NO.	A THD UNC-2A	B SHANK LENGTH	C EYE I. D.	WT. (LB.) PER EA.	D O.D. EYE	E OAL	SAFE WORK LD.
UDB-702021	1/4 - 20	1"	3/4	0.06	1-3/16	2-1/2	500
UDB-702022	5/16 - 18	1-1/8	7/8	0.11	1-7/16	2-7/8	900
UDB-702023	3/8 - 16	1-1/4	1"	0.18	1-21/32	3-9/32	1300
UDB-702024	7/16 - 14	1-3/8	1-1/16	0.23	1-27/32	3-11/16	1800
UDB-702025	1/2 - 13	1-1/2	1-3/16	0.35	2-1/16	4-1/32	2400
UDB-702026	9/16 - 12	1-5/8	1-9/32	0.47	2-9/32	4-1/16	3000
UDB-702027	5/8 - 11	1-3/4	1-3/8	0.70	2-1/2	4-25/32	4000
UDB-702028	3/4 - 10	2"	1-1/2	1.10	2-13/16	5-3/8	5000
UDB-702029	7/8 - 9	2-1/4	1-11/16	1.70	3-1/4	6-1/8	7000
UDB-702030	1 - 8	2-1/2	1-13/16	2.36	3-9/16	6-13/16	9000
UDB-702031	1-1/8 - 7	2-3/4	2"	3.41	4"	7-9/16	12000
UDB-702032	1-1/4 - 7	3"	2-3/16	4.68	4-7/16	8-1/4	15000
UDB-702034	1-1/2 - 6	3-1/2	2-1/2	7.77	5-3/16	9-11/16	21000

# Metric & Stainless Eye Bolts

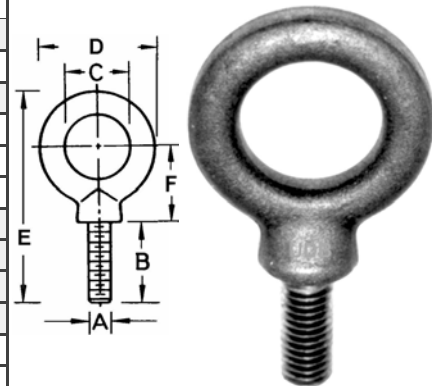
Eye Bolts  
Stainless — Metric

Forged – Carbon Steel – Self Colored – Shoulder Pattern  
Metric – Dimensions in Millimeters – Weights in Kilograms

## METRIC — FORGED CARBON STEEL SHOULDER EYE BOLTS

UNITED PART NO.	METRIC SIZE	INCH EQUIV.	A THD SIZE	B SHANK LENGTH	C I. D. EYE	D O.D. EYE	E OAL	F EYE CENTER TO SHOULDER	KG. WT. PER 100	RATED IN KGS.
UDB-714006M	M6	1/4	M6 x 1.0	25.4	19	30.0	60.3	18.5	4.7	210
UDB-714007M	M7	5/16	M7 x 1.0	28.5	22	36.5	71.4	23.2	9.0	370
UDB-714008M	M8	3/8	M8 x 1.25	31.7	25	43.0	82.5	27.8	15.2	500
UDB-714010M	M10	7/16	M10 x 1.5	35.0	27	46.0	90.5	30.9	23.0	740
UDB-714012M	M12	1/2	M12 x 1.75	38.0	30	54.0	100.8	34.0	33.0	1030
UDB-714014M	M14	9/16	M14 x 2.0	44.5	35	65.0	120.7	40.9	63.6	1600
UDB-714016M	M16	5/8	M16 x 2.0	44.5	35	65.0	120.7	40.9	67.0	1810
UDB-714018M	M18	3/4	M18 x 2.5	51.0	38	71.5	133.3	44.7	96.0	2140
UDB-714020M	M20	7/8	M20 x 2.5	57.0	41	81.0	152.4	52.5	155.0	2860
UDB-714024M	M24	1"	M24 x 3.0	63.5	44	90.4	168.3	57.1	211.0	3850
UDB-714027M	M27	1-1/8	M27 x 3.0	70.0	51	103.0	191.3	66.5	323.0	5200
UDB-714030M	M30	1-1/4	M30 x 3.5	76.0	55	112.7	208.8	72.7	422.0	6400

## METRIC SHOULDER EYE BOLTS

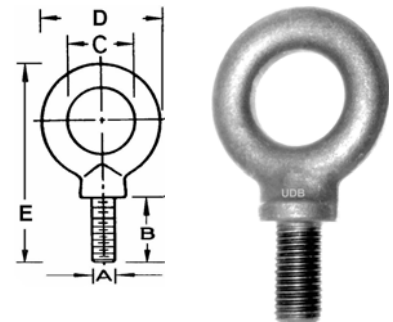


## 304 Stainless Steel Forged Eye Bolts – ANSI / ASME B 18.15

### 304 STAINLESS STEEL SHOULDER EYE BOLTS

UNITED PART NO.	A THD UNC-2A	B SHANK LENGTH	C I. D. EYE	D O.D. EYE	E OAL	WT. EA.	RATED IN LBS.
UDB-702023S	3/8 – 16	1.25	1.00	1-21/32	3-9/32	0.20	1160
UDB-702025S	1/2 – 13	1.50	1.18	2-1/16	4-1/32	0.42	2150
UDB-702027S	5/8 – 11	1.75	1.37	2-1/2	4-25/32	0.70	3440
UDB-702028S	3/4 – 10	2.00	1.50	2-13/16	5-3/8	1.08	5140
UDB-702030S	1 – 8	2.50	1.81	3-9/16	6-13/16	2.46	9370
UDB-702032S	1-1/4 – 7	3.00	2.18	4-7/16	8-1/4	4.87	14500

## STAINLESS EYE BOLTS

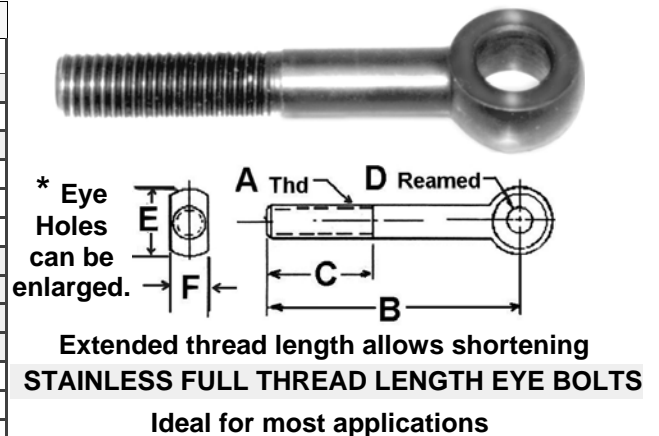


## 300 Series – Fully Machined Close Tolerances for Assembly

### STAINLESS STEEL EYE BOLTS

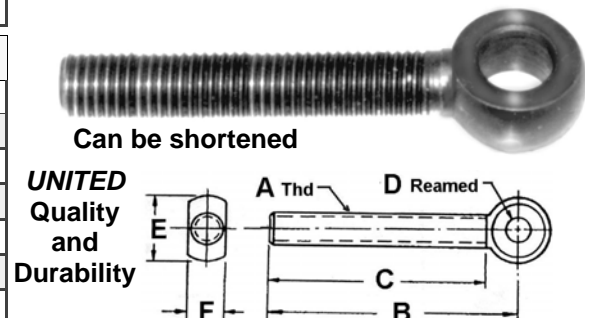
PART NO.	A THD	B	C	D	E	F
UDB-832241	5/16 – 18	1.5	7/8	* 5/16	11/16	5/16
UDB-832243	3/8 – 16	3"	1-1/2	3/8	3/4	3/8
UDB-832244	3/8 – 16	4"	1-1/2	3/8	3/4	3/8
UDB-832324	1/2 – 13	4"	1-1/2	* 3/8	1"	1/2
UDB-832325	1/2 – 13	5"	1-1/2	* 3/8	1"	1/2
UDB-832326	1/2 – 13	6"	1-1/2	* 3/8	1"	1/2
UDB-832405	5/8 – 11	5"	1-3/4	5/8	1-1/4	5/8
UDB-832406	5/8 – 11	6"	1-3/4	5/8	1-1/4	5/8
UDB-832407	5/8 – 11	7"	1-3/4	5/8	1-1/4	5/8
UDB-832408	5/8 – 11	8"	1-3/4	5/8	1-1/4	5/8
UDB-832485	3/4 – 10	5"	1-3/4	3/4	1-1/2	3/4
UDB-832486	3/4 – 10	6"	1-3/4	3/4	1-1/2	3/4
UDB-832487	3/4 – 10	7"	1-3/4	3/4	1-1/2	3/4
UDB-832488	3/4 – 10	8"	1-3/4	3/4	1-1/2	3/4

## STAINLESS EYE BOLTS



### STAINLESS STEEL FULL THREAD EYE BOLTS

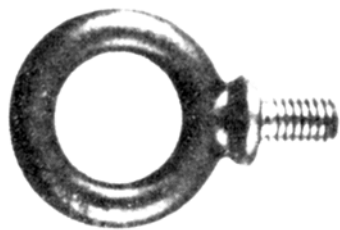
PART NO.	A THD	B	C	D	E	F
UDB-832016	1/4 – 20	3"	2-1/4	1/4	1-3/16	1/4
UDB-832020	5/16 – 18	4"	3-1/4	5/16	1-7/16	5/16
UDB-832024	3/8 – 16	5"	4-1/4	3/8	3/4	3/8
UDB-832032	1/2 – 13	5"	4"	1/2	1"	1/2
UDB-832040	5/8 – 11	6"	5-1/4	5/8	1-1/4	5/8
UDB-832048	3/4 – 10	6"	5-1/8	3/4	1-1/2	3/4



**Eye Bolts With  
Shoulder, Nut or Blank**

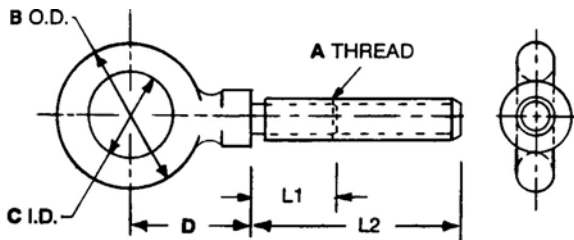
# Shoulder Eye Bolts With Shoulder, Nut and Blanks

## SHOULDER EYE BOLTS



Quality Steel  
Drop Forged  
Heat Treated

**DO NOT USE  
EYEBOLTS ON  
ANGULAR LIFTS.**



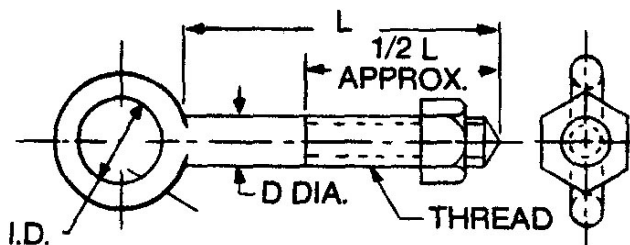
Do not grind, machine or undercut. Seat properly.  
Do not exceed capacity of bolt or hole.  
If elongated or damaged, replace immediately.

### UNIFIED NATIONAL COARSE THREAD

SHOULDER EYE BOLTS						
UNITED PART NO.	A THD	B O.D.	C EYE I. D.	D	SHANK LENGTH	
					L1	L2
UDB-713405AS	5/16 - 18	1-7/16	7/8	1"	1-3/4	—
UDB-713406XS	3/8 - 16	1-21/32	1"	1-1/16	9/16	—
UDB-713406YS					—	15/16
UDB-713408XS	1/2 - 13	2-1/16	1-3/16	1-3/8	3/4	—
UDB-713408YS					—	1-1/4
UDB-713410XS	5/8 - 11	2-1/2	1-3/8	1-11/16	15/16	—
UDB-713410YS					—	1-9/16
UDB-713412XS	3/4 - 10	2-13/16	1-1/2	1-15/16	1-1/8	—
UDB-713412YS					—	1-7/8
UDB-713414XS	7/8 - 9	3-1/4	1-11/16	2-3/16	1-5/16	—
UDB-713414YS					—	2-3/16
UDB-713416XS	1 - 8	3-9/16	1-13/16	2-5/16	1-1/2	—
UDB-713416YS					—	2-1/2
UDB-713420XS	1-1/4 - 7	4-7/16	2-3/16	2-7/8	1-7/8	—
UDB-713420YS					—	3"

## LARGE EYE BOLTS WITH NUT

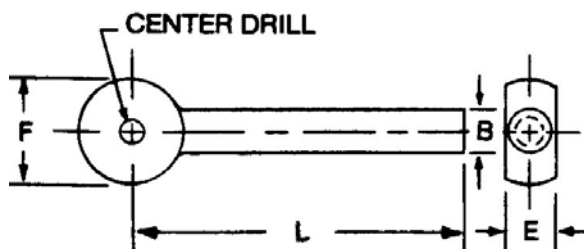
### REGULAR and EXTRA LENGTH STYLES



LARGE EYE BOLTS WITH NUT						
UNITED PART NO.	D SHANK DIA	I.D.	THD NC-2	L REGULAR LENGTH	L EXTRA LENGTH	MAX SAFE WORK LOAD
UDB-713104	1/4	1/2	1/4 - 20	2	4	300
UDB-713105	5/16	5/8	5/16 - 18	2-1/4	4-1/4	500
UDB-713106	3/8	3/4	3/8 - 16	2-1/2	4-1/2	700
UDB-713108	1/2	1	1/2 - 13	3-1/4	6	1200
UDB-713110	5/8	1-1/4	5/8 - 11	4	6	2000
UDB-713112	3/4	1-1/2	3/4 - 10	4-1/2	6	2800
UDB-713114	7/8	1-3/4	7/8 - 9	5	8	3800
UDB-713116	1	2	1 - 8	6	9	5000

Add 'L' to Part Number for Extra Length Eyebolt.

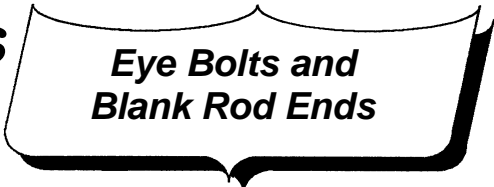
## EYE BOLT BLANKS



**READY  
TO  
CUSTOMIZE!**

EYE BOLT BLANKS				
UNITED PART NO.	B SHANK DIA.	E	F	L
UDB-713463	1/4	5/16	3/4	3-15/16
UDB-713489	1/4	5/16	3/4	5-9/16
UDB-713512	5/16	3/8	29/32	6
UDB-713563	5/16	3/8	29/32	3-15/16
UDB-713589	5/16	3/8	29/32	5-9/16
UDB-713612	3/8	7/16	31/32	6
UDB-713663	3/8	7/16	31/32	3-15/16
UDB-713689	3/8	7/16	31/32	5-9/16
UDB-713812	1/2	9/16	1-1/4	10
UDB-713863	1/2	9/16	1-1/4	3-15/16
UDB-713889	1/2	9/16	1-1/4	5-9/16

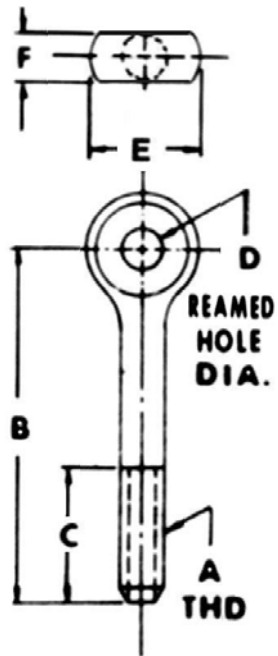
# Plain & Metric Eye Bolts



PART NO.	A	B	C	D	E	F
UDB-932400	1/4-20	2"	3/4	3/16	1/2	1/4
UDB-932402		3	1-1/4	3/16	1/2	1/4
UDB-932403		3	* FULL THD	3/16	1/2	1/4
UDB-932403A		4	3/4	3/16	1/2	1/4
UDB-932404	5/16-18	3	1-1/2	1/4	5/8	5/16
UDB-932406		4	2	1/4	5/8	5/16
UDB-932408		3	1-1/2	5/16	5/8	5/16
UDB-932410		4	2	5/16	5/8	5/16
UDB-932411		4	* FULL THD	5/16	5/8	5/16
UDB-932412		3	1-1/2	5/16	3/4	3/8
UDB-932414	3/8-16	5	2-1/2	5/16	3/4	3/8
UDB-932416		3	1-1/2	3/8	3/4	3/8
UDB-932416A		4	1-1/2	3/8	3/4	3/8
UDB-932417		3-3/4	2	3/8	3/4	3/8
UDB-932418		5	2-1/2	3/8	3/4	3/8
UDB-932419		5	* FULL THD	3/8	3/4	3/8
UDB-932420		3-3/4	1-1/2	3/8	1"	1/2
UDB-932422		5	2-1/2	3/8	1"	1/2
UDB-932424	1/2-13	3-3/4	1-1/2	3/8	1"	1/2
UDB-932426		5	2	3/8	1"	1/2
UDB-932427		5	* FULL THD	3/8	1"	1/2
UDB-932427A		6	1-1/2	3/8	1"	1/2
UDB-932428	5/8-11	4-1/2	2	5/8	1-1/4	5/8
UDB-932430		6	2-1/2	5/8	1-1/4	5/8
UDB-932431		6	* FULL THD	5/8	1-1/4	5/8
UDB-932431A		7	1-3/4	5/8	1-1/4	5/8
UDB-932431B		8	1-3/4	5/8	1-1/4	5/8
UDB-932432		4-1/2	2	3/4	1-1/2	3/4
UDB-932434	6	2-1/2	3/4	1-1/2	3/4	
UDB-932435	3/4-10	6	* FULL THD	3/4	1-1/2	3/4
UDB-932436		7	1-3/4	5/8	1-1/2	3/4
UDB-932437	8	1-3/4	5/8	1-1/2	3/4	
UDB-932438	1"-8	10"	* FULL THD	5/8	2"	1"
METRIC	A	B	C	D	E	F
UDB-932440	M6	50MM	40MM	6MM	12MM	6MM
UDB-932445	M6	75MM	66MM	6MM	12MM	6MM
UDB-932450	M8	75MM	65MM	8MM	16MM	8MM
UDB-932455	M8	100MM	90MM	8MM	16MM	8MM
UDB-932460	M10	75MM	60MM	10MM	20MM	10MM
UDB-932465	M10	100M	85MM	10MM	20MM	10MM
UDB-932470	M10	125MM	110MM	10MM	20MM	10MM
UDB-932475	M12	100MM	85MM	12MM	24MM	12MM
UDB-932480	M12	125MM	110MM	12MM	24MM	12MM
UDB-932485	M16	115MM	95MM	16MM	32MM	16MM
UDB-932490	M16	150MM	130MM	16MM	32MM	16MM
UDB-932495	M20	150MM	125MM	20MM	40MM	20MM

For Safe and Sure Lifting

## PLAIN EYE BOLTS



\* With our Special Full Thread Length Eye Bolts, you can shorten the length without sacrificing adequate thread for your job.

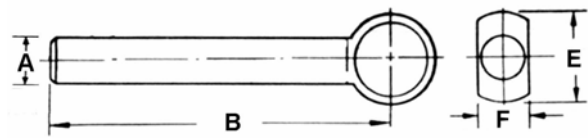


UNITED Blank Rod Ends are fully machined to close dimension. They are not heat treated.

## BLANK ROD ENDS

### 5140 ALLOY CARBON STEEL BLANK ROD ENDS

PART NO.	A	B	E	F
UDB-932500	1/4	3"	1/2	1/4
UDB-932502	1/4	5-1/4	1/2	1/4
UDB-932504	5/16	3	5/8	5/16
UDB-932506	5/16	6	5/8	5/16
UDB-932508	3/8	2-1/2	3/4	5/16
UDB-932510	3/8	4	3/4	5/16
UDB-932512	1/2	2-1/2	1"	3/8
UDB-932514	1/2	6	1"	3/8
UDB-932516	5/8	3	1-1/4	3/8
UDB-932518	5/8	6-1/2	1-1/4	3/8
UDB-932520	3/4	4-1/2	1-1/2	1/2
UDB-932522	3/4	5	1-1/2	1/2
UDB-932524	1"	4-1/2	2"	1/2



Center drilled on head for easy modification. Shank diameter is centerless ground.

### 302 STAINLESS STEEL BLANK ROD ENDS

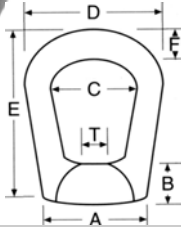
PART NO.	A	B	E	F
UDB-932530	3/8	3"	3/4	3/8
UDB-932532	1/2	6	1"	1/2
UDB-932534	5/8	6	1-1/4	5/8
UDB-932536	3/4	3-1/2	1-1/2	3/4
UDB-932538	3/4	6	1-1/2	3/4
UDB-932540	7/8	6	1-3/4	7/8
UDB-932542	1"	10	2"	1"



# Eye Nuts, Lifting Bolts & Turnbuckles

# Eye Nuts – Lifting Eye Bolts and Turnbuckles

## EYE NUTS

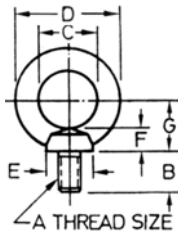


Heavy Duty Eye Nuts are self-colored and made of Forged Carbon Steel and heat treated. Hot galvanized is available on request.

PART NO.	T THD	A BELL	B THD LEN	C EYE INSIDE	D EYE OUTSIDE	E OAL LEN	F BALL	Wt. Per 100 Pcs	RATED
UDB-716037	3/8-16	7/8	5/8	1-1/4	2	2-1/2	3/8	22.0	2700
UDB-716050	1/2-13	7/8	5/8	1-1/4	2	2-1/2	3/8	19.5	2700
UDB-716062	5/8-11	1-3/8	3/4	1-1/2	2-1/2	3	1/2	60.0	5000
UDB-716075	3/4-10	1-3/8	3/4	1-1/2	2-1/2	3	1/2	56.0	5000
UDB-716087	7/8-9	1-9/16	1	2-1/4	4	5	7/8	174.1	10000
UDB-716100	1-8	1-9/16	1	2-1/4	4	5	7/8	167.2	10000

## LIFTING EYE BOLTS

Universally used — Large shoulder for low line strength.



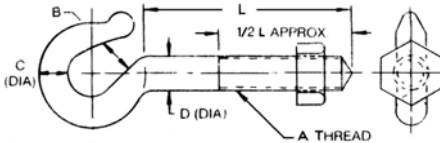
PART NO.	A	B	C	D	E	F	G	RATED
UDB-828000	1/4-20	9/16	7/8	1-1/4	9/16	5/16	11/16	100
UDB-828005	M8x1.25	9/16	7/8	1-1/4	9/16	5/16	11/16	100
UDB-828010	3/8-16	3/4	3/4	1-1/2	13/16	3/8	7/8	400
UDB-828015	M10x1.5	3/4	3/4	1-1/2	13/16	3/8	7/8	400
UDB-828020	1/2-13	7/8	1-3/16	2	1	7/16	1-1/8	1180
UDB-828025	M12x1.75	7/8	1-3/16	2	1	7/16	1-1/8	1180
UDB-828030	5/8-11	1-1/16	1-3/8	2-3/8	1-1/8	9/16	1-1/4	2800
UDB-828035	M16x2	1-1/16	1-3/8	2-3/8	1-1/8	9/16	1-1/4	2800
UDB-828040	3/4-10	1-3/16	1-1/2	2-5/8	1-3/8	3/4	1-5/16	5100
UDB-828045	M20x2.5	1-3/16	1-1/2	2-5/8	1-3/8	3/4	1-5/16	5100

## HOOK BOLT WITH NUT

Excellent Support and Tension Hold Hook  
ZINC PLATED – HOT ELECTRO-GALVANIZED FOR LINE ADJUSTMENT



C1030 THREADS UNC 2A AND 2B FORGED STEEL NORMALIZED – ASTM A688 LA 553



PART NO.	A THD NC-2	B	C DIA	D DIA	REGULAR LENGTH HOOK	EXTRA LENGTH HOOK ADD 'L' to Part No.
UDB-783204	1/4 – 20	7/16	9/32	1/4	2	—
UDB-783205	5/16 – 18	1/2	3/8	5/16	2-3/4	—
UDB-783206	3/8 – 16	9/16	7/16	3/8	2-1/2	4-1/2
UDB-783208	1/2 – 13	21/32	19/32	1/2	3-1/2	5-1/2

## TURNBUCKLES

STANDARD PACK – 10 PIECES ELECTRO-GALVANIZED

MEETS FEDERAL SPECIFICATIONS  
FF-T-791b, TYPE 1, FORM 1  
Turnbuckles C1035 – Throat C1030  
Thread UNC 2A & 2B – All Normalized  
ASTM A668 CLASS 3

EYE & EYE



HOOK & EYE



HOOK & HOOK



CAST ALUMINUM	CAST IRON MALLEABLE	CAST ALUMINUM	CAST IRON MALLEABLE	CAST ALUMINUM	CAST IRON MALLEABLE	THREAD DIA.	DIM (IN.) OVERALL LENGTH	
							CLOSED	OPEN
UDB-851149	UDB-851378	UDB-852146	UDB-852375	UDB-853143	UDB-853372	1/4-20	5-1/2	7-5/8
UDB-851170	UDB-851408	UDB-852177	UDB-852405	UDB-853174	UDB-853402	5/16-18	6-3/4	9-1/4
UDB-851200	UDB-851439	UDB-852207	UDB-852436	UDB-853204	UDB-853433	3/8-16	7-1/2	10-1/2
UDB-851231	UDB-851460	UDB-852238	UDB-852467	UDB-853235	UDB-853464	3/8-16	11-3/8	17-3/8

# Metric & Std. Double Swivel Eye Bolts

Double Swivel Eye Bolts

DOUBLE SWIVEL EYE BOLTS



Smooth  
Ball Bearing  
Action!



Large Ring  
for most all  
hook sizes.



Optional STAR LUG

No wrenches required!  
Spin the base down  
flush and tap one of the  
lugs to tighten.

Quick and Easy!

The MOLD HANDLER®  
for Mold Handling the Safe and Simple Way!

Handle and position injection molds quickly and simply  
with UNITED's answer — Mold Handler Double Swivel Eye Bolts  
with ball bearings to provide smooth swiveling  
and safer pivoting action.

Injection Molding positioning and handling  
made faster, better and safer!

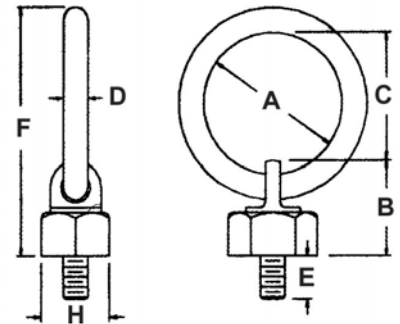
USA STANDARD INCH									
PART NO.	A	B	C	D	E	F	H	THD SIZE	RATED LOAD
UDB-942620EB	2	1.48	1.75	3/8	1/2	3.60	1	5/16 - 18	800 LBS.
UDB-942630EB	2	1.48	1.75	3/8	5/8	3.60	1	3/8 - 16	1,000 LBS.
UDB-942640EB	3	2.682	2.57	5/8	3/4	5.87	1-3/4	1/2 - 13	2,500 LBS.
UDB-942650EB	3	2.682	2.57	5/8	1	5.87	1-3/4	5/8 - 11	4,000 LBS.
UDB-942660EB	4	4.25	3.31	1	1-1/4	8.56	2-3/4	3/4 - 10	7,000 LBS.
UDB-942670EB	4	4.25	3.31	1	1-1/2	8.56	2-3/4	1 - 8	10,000 LBS.

The MOLD HANDLER® yields to the slightest touch.

Full range 360° rotation provides accurate positioning.

Pivoting 180° allows easier access when laying down molds or rolling  
them over to work on.

Large Ring for many sizes of hooks.  
Rated to 10,000 lbs. in Standard and 4,200 lbs. in Metric sizes.



METRIC									
PART NO.	A	B	C	D	E	F	H	THD SIZE	RATED LOAD
UDB-942920EB	2	1.48	1.75	3/8	1/2	3.60	1	M8x1.25	400 LBS.
UDB-942930EB	2	1.48	1.75	3/8	5/8	3.60	1	M10x1.50	500 LBS.
UDB-942940EB	3	2.68	2.57	5/8	3/4	5.87	1-3/4	M12x1.75	1,050 LBS.
UDB-942950EB	3	2.68	2.57	5/8	1	5.87	1-3/4	M16x2.00	1,900 LBS.
UDB-942960EB	4	4.25	3.31	1	1-1/4	8.56	2-3/4	M20x2.50	2,150 LBS.
UDB-942970EB	4	4.25	3.31	1	1-1/2	8.56	2-3/4	M24x3.00	4,200 LBS.