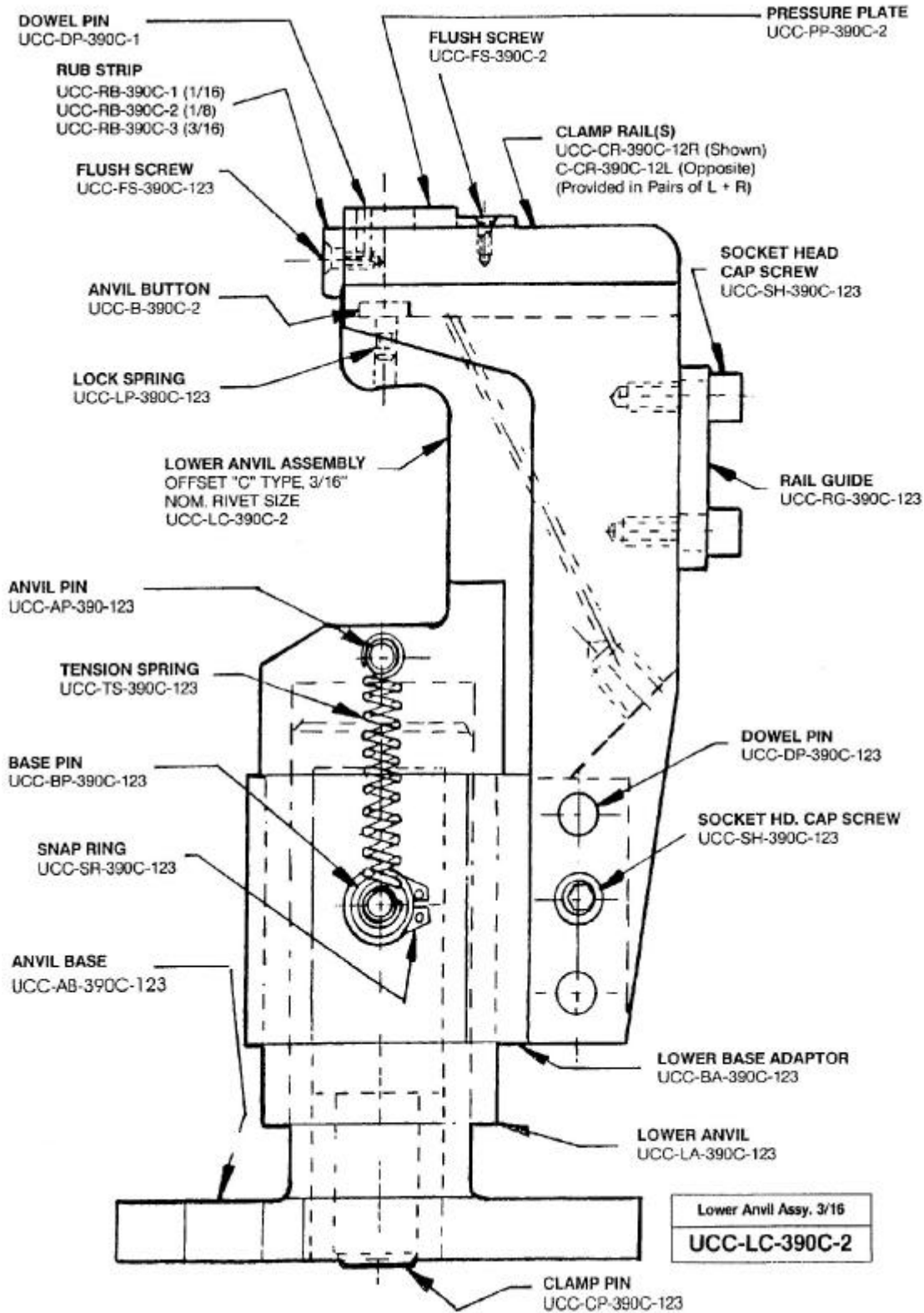


**Anvil Assembly  
Specialists**

**UCC-LC-390C-2**

**LOWER ANVIL ASSEMBLY  
Parts View**

# Lower Anvil Assembly Offset 'C' Type for 3/16 Rivets UCC-LC-390C-2

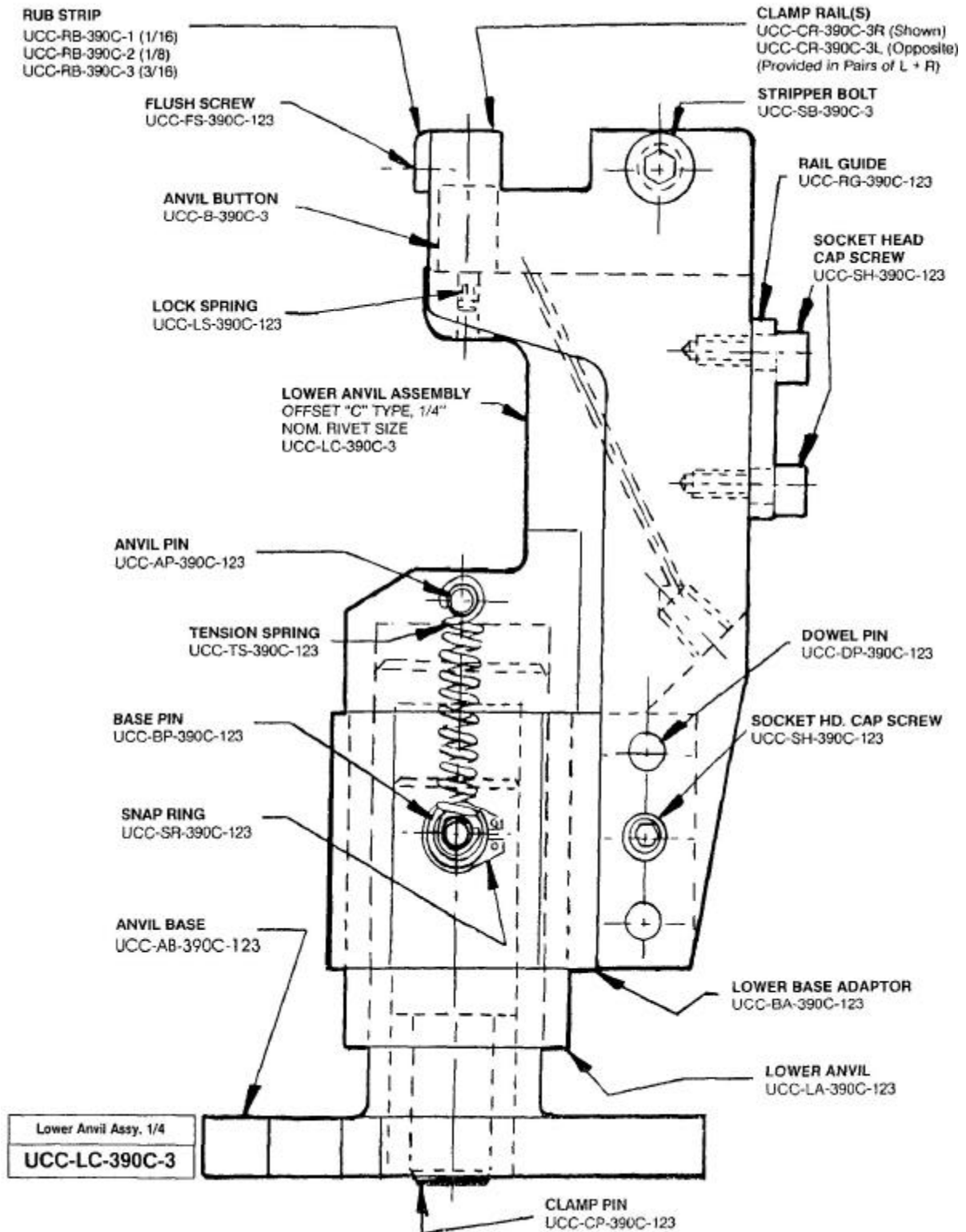


# Lower Anvil Assembly Offset 'C' Type for 1/4 Nominal Rivets UCC-LC-390C-3

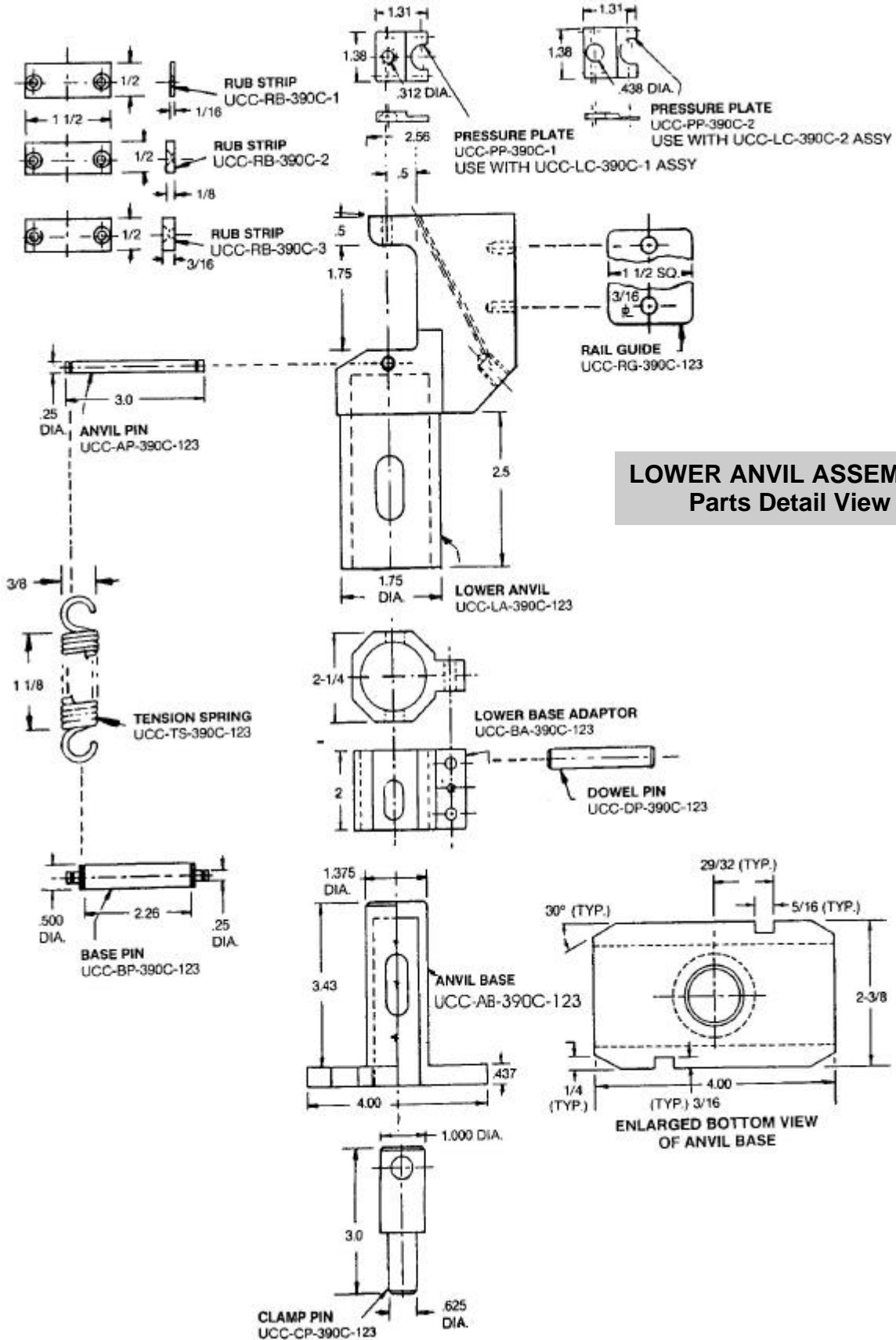
Anvil Assembly  
Specialists

UCC-LC-390C-3

LOWER ANVIL ASSEMBLY  
Parts View



# Lower Anvil Assembly Accessory Parts Detail

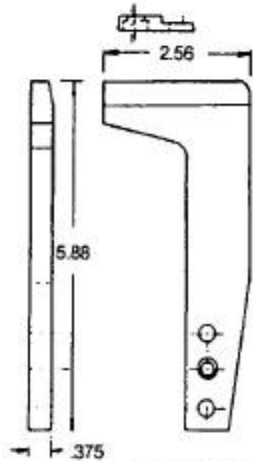
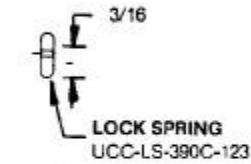
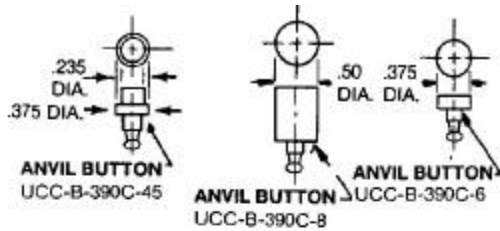


**LOWER ANVIL ASSEMBLY  
Parts Detail View**

# Lower Anvil Assembly Accessory Parts Detail

Anvil Assembly  
Specialists

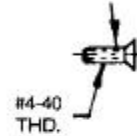
## LOWER ANVIL ASSEMBLY Parts Detail View



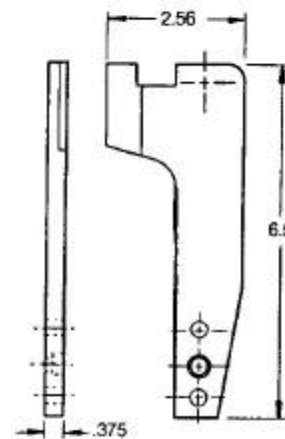
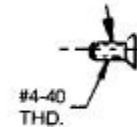
USE ON  
UCC-LC-390C-1 & 2  
ASSY. ONLY

**CLAMP RAIL(S)**  
UCC-CR-390C-12 R (Shown)  
UCC-CR-390C-12 L (Opposite)  
(Provided in Pairs of L + R)

**FLUSH SCREW**  
UCC-FS-390C-1

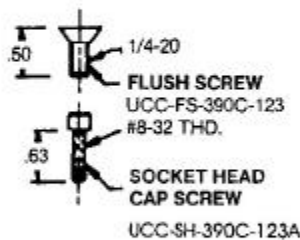


**FLUSH SCREW**  
UCC-FS-390C-2



**CLAMP RAIL(S)**  
UCC-CR-390C-3 R (Shown)  
UCC-CR-390C-3 L (Opposite)  
(Provided in Pairs of L + R)

USED ON  
UCC-LC-390C-3  
ASSY. ONLY



**SOCKET HEAD CAP SCREW**  
UCC-SH-390C-123B

