

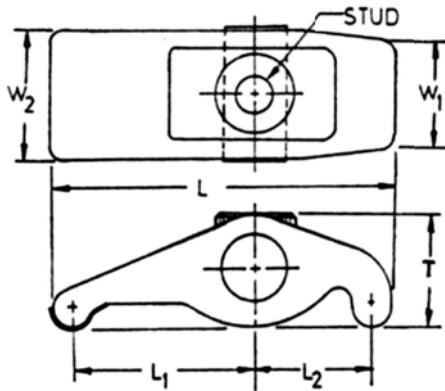
Adjustable Pivot Clamps And Assemblies With T-Slot Bolts and Flange Nuts

Adjustable Pivot
Clamps & Assemblies

FORGED ADJUSTABLE PIVOT CLAMPS



Removable brass
Shims protect work piece.



Strong!
Dependable!
Does the Job!
Economical
Products
from *UNITED*

ADJUSTABLE PIVOT CLAMP ASSEMBLY

ASSEMBLY
INCLUDES: T-SLOT
BOLT, FLANGE
NUT, SPRING
and
PIVOT CLAMP.



UNITED's Adjustable Pivot Clamp Assemblies allow quick setups.

Strong forged steel Pivot Clamp instantly adjusts height without blocks or shims.

UNITED's Adjustable Pivot Clamp Assemblies swing 90° in either direction. Clearance for loading is assured.

Removable brass Shims protect work piece and machine surfaces. One piece assembly eliminates lost clamp pieces.

PIVOT CLAMP ASSEMBLY PART NO.	T-SLOT BOLT LENGTH	T-SLOT BOLT PART NO.	PIVOT CLAMP PART NO.	THREAD SIZE	CLAMPING RANGE	L	L ₁	L ₂	T	W ₁	W ₂
UDB-850745	3"	UDB-942330	UDB-850740	3/8 - 16	0 TO 1-3/4	3-1/4	1-7/8	1-1/8	1"	7/8	1-1/4
UDB-850755	4"	UDB-942540	UDB-850750	1/2 - 13	0 TO 2-1/16	4"	2-5/16	1-7/16	1-7/16	1-1/8	1-5/8
UDB-850765	5"	UDB-942650	UDB-850760	5/8 - 11	0 TO 3"	5-1/2	3-1/4	2"	1-7/8	1-3/8	1-7/8
UDB-850775	6"	UDB-942760	UDB-850770	3/4 - 10	0 TO 4-1/4	6-1/4	3-1/2	2-1/8	2-1/4	2"	2-5/8

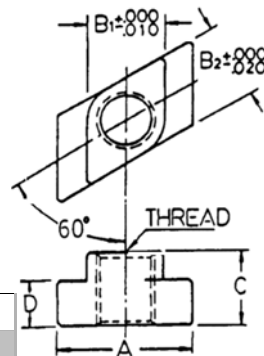
You can add Studs and Clamp Straps without disturbing previous set-ups.

UNITED's Rotary Tee Nuts supplement Standard T-Slot Nuts.

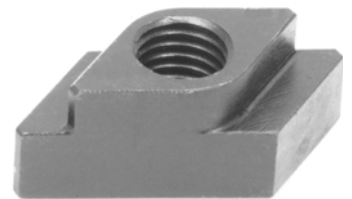
Seven sizes available that cover 3/8, 1/2, 5/8 and 3/4 stud diameters with different slot widths.

Case hardened alloy steel. Last thread is closed.

PART NO.	THREAD	TABLE SLOT	A	B	C	D
UDB-825736	3/8 - 16	1/2	7/8	0.495	1/2	9/32
UDB-825755	1/2 - 13	9/16	7/8	0.557	5/8	11/32
UDB-825756	1/2 - 13	5/8	1"	0.620	5/8	11/32
UDB-825757	1/2 - 13	11/16	1-1/8	0.682	3/4	7/16
UDB-825765	5/8 - 11	11/16	1-1/8	0.682	3/4	7/16
UDB-825766	5/8 - 11	3/4	1-1/4	0.745	3/4	15/32
UDB-825777	3/4 - 10	1"	1-5/8	0.995	1"	5/8

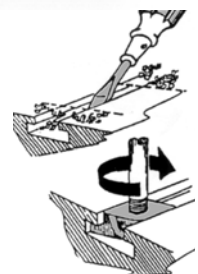


ROTARY TEE NUTS



QUICK and EASY!

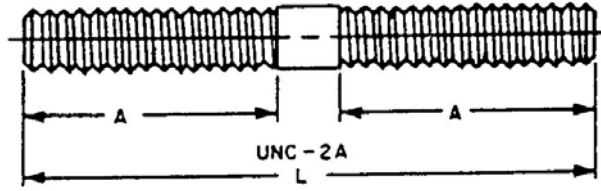
- CLEAN TABLE SLOT.
- INSERT the ROTARY TEE NUT WITH STUD.



Clamping Studs T-Slot Nuts

UNITED Clamping Studs and T-Slot Nuts

CLAMPING STUDS

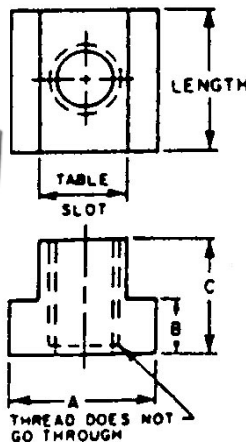


Stressproof Steel. Tensile Strength is 125,000 Minimum P.S.I.
 Brinell is 225. Yield is 100,000 Minimum P.S.I. Elongation is 10% in 2".
 Machinability is 80% of B-1112. Rockwell is 25C. Heat Treated Steel.
 Black Oxide finish.

O/A	1/4 - 20	5/16 - 18	3/8 - 16	1/2 - 13	5/8 - 11	3/4 - 10	7/8 - 9	1" - 8
LENGTH	A = 1"	A = 1-1/8	A = 1-1/4	A = 1-1/2	A = 1-3/4	A = 2"	A = 2-1/4	A = 2-1/2
	PART NO.	PART NO.	PART NO.	PART NO.	PART NO.	PART NO.	PART NO.	PART NO.
1-1/2	UDB-940003	UDB-940103	UDB-940203	UDB-940303	■ UDB-940403			
2"	■ UDB-940004	■ UDB-940104	■ UDB-940204	■ UDB-940304	■ UDB-940404			
2-1/2	■ UDB-940005	■ UDB-940105	■ UDB-940205	■ UDB-940305	UDB-940405			
3"	■ UDB-940006	■ UDB-940106	■ UDB-940206	■ UDB-940306	■ UDB-940406	■ UDB-940506	■ UDB-940606	■ UDB-940706
3-1/2	■ UDB-940007	■ UDB-940107	■ UDB-940207	■ UDB-940307	■ UDB-940407	■ UDB-940507	■ UDB-940607	■ UDB-940707
4"	■ UDB-940008	■ UDB-940108	■ UDB-940208	■ UDB-940308	■ UDB-940408	■ UDB-940508	UDB-940608	UDB-940708
4-1/2	UDB-940009	UDB-940109	■ UDB-940209	■ UDB-940309	■ UDB-940409	■ UDB-940509	UDB-940609	UDB-940709
5"	UDB-940010	UDB-940110	■ UDB-940210	■ UDB-940310	■ UDB-940410	■ UDB-940510	UDB-940610	UDB-940710
5-1/2	UDB-940011	UDB-940111	■ UDB-940211	■ UDB-940311	■ UDB-940411	■ UDB-940511	UDB-940611	◆ UDB-940711
6"	UDB-940012	UDB-940112	■ UDB-940212	■ UDB-940312	■ UDB-940412	■ UDB-940512	UDB-940612	UDB-940712
6-1/2	◆ UDB-940013	◆ UDB-940113	UDB-940213	UDB-940313	■ UDB-940413	■ UDB-940513	UDB-940613	◆ UDB-940713
7"	◆ UDB-940014	◆ UDB-940114	UDB-940214	UDB-940314	■ UDB-940414	■ UDB-940514	UDB-940614	UDB-940714
7-1/2	◆ UDB-940015	◆ UDB-940115	UDB-940215	UDB-940315	■ UDB-940415	■ UDB-940515	UDB-940615	◆ UDB-940715
8"	◆ UDB-940016	◆ UDB-940116	UDB-940216	UDB-940316	■ UDB-940416	■ UDB-940516	UDB-940616	◆ UDB-940716
8-1/2				UDB-940317	◆ UDB-940417			
9"				UDB-940318	UDB-940418	UDB-940518	UDB-940618	UDB-940718
9-1/2				UDB-940319	◆ UDB-940419			
10"				UDB-940320	UDB-940420	UDB-940520	UDB-940620	UDB-940720
10-1/2					UDB-940421			
11"					UDB-940422	UDB-940522	UDB-940622	UDB-940722
11-1/2					UDB-940423			
12"					UDB-940424	UDB-940524	UDB-940624	UDB-940724

■ = CONFORMS TO T.C.M.A. STANDARDS ◆ = SPECIALS NOTE: STUDS TOO SHORT FOR GIVEN THREAD LENGTHS ARE THREADED AS CLOSE TO CENTER AS PRACTICAL

T-SLOT NUTS



An incomplete thread is left at the T-Nut Base. This eliminates threading the stud through the bottom of the T-Nut and damaging the Table Slot.
 Heat Treated Steel.
 Black Oxide finish.

PART NO.	REF. NO.	TABLE SLOT	THREAD SIZE	A	B	C	LENGTH
UDB-957001	375-TN	3/8	5/16 - 18	5/8	3/16	1/2	7/8
■ UDB-957002	437-TN	7/16	3/8 - 16	11/16	7/32	1/2	7/8
■ UDB-957003	500-TN	1/2	3/8 - 16	7/8	9/32	1/2	7/8
UDB-957004	560-TN	9/16	3/8 - 16	7/8	11/32	5/8	1-1/8
■ UDB-957005	562-TN	9/16	1/2 - 13	7/8	11/32	5/8	1-1/8
■ UDB-957006	625-TN	5/8	1/2 - 13	1	11/32	5/8	1-1/8
■ UDB-957007	680-TN	11/16	1/2 - 13	1-1/8	7/16	3/4	1-1/4
■ UDB-957008	687-TN	11/16	5/8 - 11	1-1/8	7/16	3/4	1-1/4
■ UDB-957009	750-TN	3/4	5/8 - 11	1-1/4	15/32	3/4	1-1/4
■ UDB-957010	800-TN	13/16	5/8 - 11	1-1/4	9/16	1	1-1/2
■ UDB-957011	812-TN	13/16	3/4 - 10	1-1/4	9/16	1	1-1/2
■ UDB-957012	875-TN	7/8	3/4 - 10	1-1/2	9/16	1	1-1/2
■ UDB-957013	102-TN	1	3/4 - 10	1-5/8	5/8	1	1-3/4
UDB-957014	100-TN	1	7/8 - 9	1-5/8	5/8	1	1-3/4
■ UDB-957015	1060-TN	1-1/16	3/4 - 10	1-5/8	11/16	1-1/8	2
UDB-957016	1062-TN	1-1/16	1" - 8	1-5/8	11/16	1-1/8	2

■ = CONFORMS TO T.C.M.A. STANDARDS

T-Nuts, Flange Coupling Nuts & Studs Kits

T-Nut Sets
Punch Press Sets

T-NUT and STUD SETS

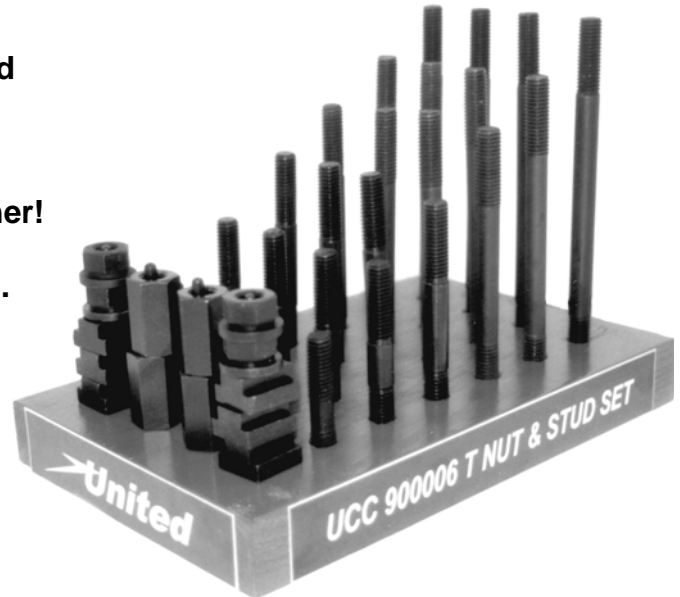
Each Set includes:

- 4 Studs each length:
3" - 4" - 5" - 6" - 7" - 8" of the set selected
- 6 T-Nuts in sizes to fit your machine
- 4 Coupling Nuts
- 4 Flanged Nuts
- 1 UNITED Holder

Plus
A FREE Chip T-Slot Cleaner!
See below.

AVAILABLE IN METRIC.

T-NUT STUD SET NO.	T-SLOT SIZE	TABLE SLOT	T-NUT PART NO.	STUD & NUT SIZES
UCC-900001	375-TS	3/8	UCC-957001	5/16-18
UCC-900002	437-TS	7/16	UCC-957002	3/8-16
UCC-900003	500-TS	1/2	UCC-957003	3/8-16
UCC-900004	560-TS	9/16	UCC-957004	3/8-16
UCC-900005	562-TS	9/16	UCC-957005	1/2-13
UCC-900006	625-TS	5/8	UCC-957006	1/2-13
UCC-900007	680-TS	11/16	UCC-957007	1/2-13
UCC-900008	687-TS	11/16	UCC-957008	5/8-11
UCC-900009	750-TS	3/4	UCC-957009	5/8-11
UCC-900010	800-TS	13/16	UCC-957010	5/8-11
UCC-900011	812-TS	13/16	UCC-957011	3/4-10
UCC-900012	875-TS	7/8	UCC-957012	3/4-10
UCC-900013	102-TS	1"	UCC-957013	3/4-10
UCC-900014	100-TS	1"	UCC-957014	7/8-9
UCC-900015	1060-TS	1-1/16	UCC-957015	3/4-10
UCC-900016	1062-TS	1-1/16	UCC-957016	1"-8



Set-Ups for Mills, Presses, Boring Machines and all machines with T-Slot Base are made for UNITED T-Nut and Stud Sets.

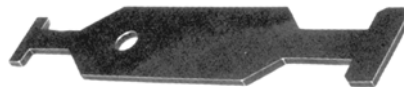
Sets accommodate 3/8 T-Slot thru 1-1/16 Table Slots.

Check your table slots and select the correct set.

Each Set includes:

- 4 Studs each length:
3" - 4" - 5" - 6" - 7" - 8"
of the set selected
- 4 Coupling Nuts
- 8 Flanged Nuts
- 1 UNITED Holder

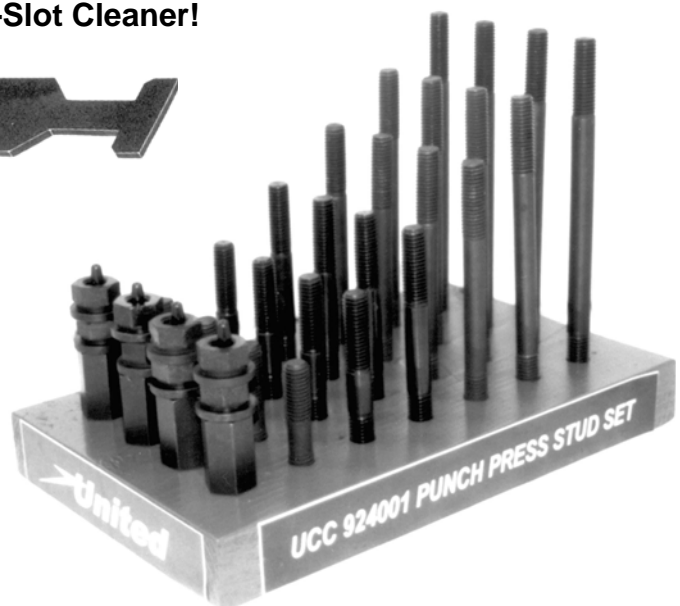
Plus
A FREE Chip T-Slot Cleaner!



AVAILABLE
IN METRIC.

PUNCH PRESS SETS

PUNCH PRESS SET NO.	FLANGE & COUPLING NUT PART NO.	STUD & NUT THREAD SIZE
UCC-924001	.500-CFN	1/2-13
UCC-924002	.625-CFN	5/8-11
UCC-924003	.750-CFN	3/4-10
UCC-924004	.875-CFN	7/8-9
UCC-924005	1.000-CFN	1"-8



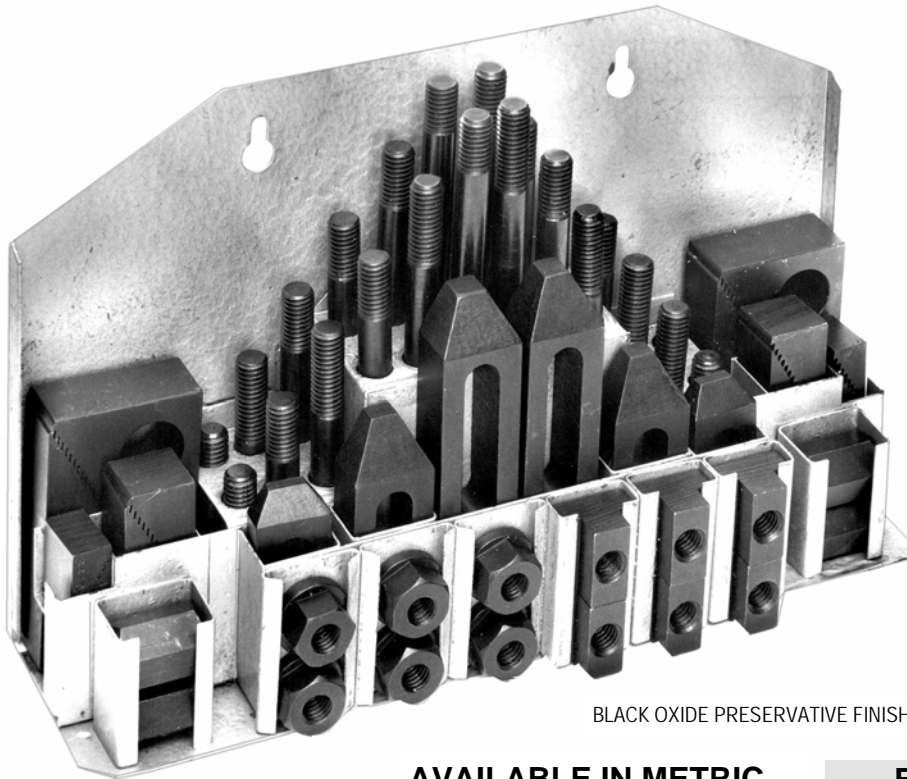
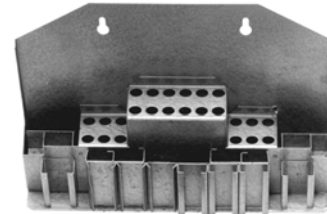
**53 Piece
Clamping Kits**

Complete Basic Clamping Kits 53 Pieces

*One Kit for every size
milling machine table slot!*

No more searching and down time
with **UNITED CLAMPING KITS.**

UNITED offers the Clamping Kit
designed to attach to your mill or
work bench. Select the correct
table slots for each mill.



BLACK OXIDE PRESERVATIVE FINISH

AVAILABLE IN METRIC.

Each Kit includes 53 Pieces:
4 Studs each length (24 Studs):
 3" - 4" - 5" - 6" - 7" - 8"
6 T-Nuts in sizes to fit your machine
4 Coupling Nuts
6 Flanged Nuts
6 Step Clamps
6 Step Blocks
1 UNITED Holder

**Plus
A FREE Chip
T-Slot Cleaner!**



**UDB-940838 IS OUR MOST
POPULAR KIT!**
Fits all Bridgeport Mills.



COMPLETE KIT NO.	TABLE SLOT	STUD SIZE	STUD & NUT SET PART NO.	STEP BLOCK & STEP CLAMP SET PART NO.
UDB-940830	7/16	3/8-16	UDB-940800	UDB-940930
UDB-940832	1/2	3/8-16	UDB-940802	UDB-940930
UDB-940834	9/16	3/8-16	UDB-940804	UDB-940930
UDB-940836	9/16	1/2-13	UDB-940805	UDB-940935
UDB-940838	5/8	1/2-13	UDB-940807	UDB-940935
UDB-940840	11/16	1/2-13	UDB-940809	UDB-940935
UDB-940842	11/16	5/8-11	UDB-940810	UDB-940940
UDB-940844	3/4	5/8-11	UDB-940812	UDB-940940
UDB-940846	13/16	5/8-11	UDB-940814	UDB-940940

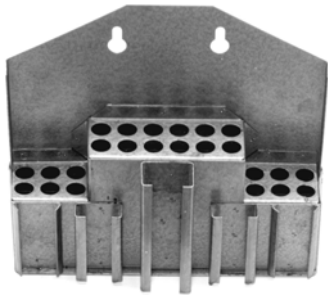
Basic T-Nuts & Studs Sets — 37 Pieces

**Basic 37 Piece
T-Nut and Stud Sets**

ALL STUDS, T-NUTS, FLANGE NUTS, COUPLING NUTS
IN A METAL CONTAINER

T-NUT and STUD KITS

Wasted Time is eliminated!
**Safe clamping is assured when each of
your mills has its own set-up tools.**



ONE FOR EVERY MILLING MACHINE!



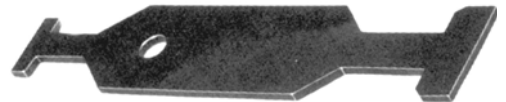
BLACK OXIDE PRESERVATIVE FINISH

AVAILABLE IN METRIC.

**The UDB-940807 IS OUR MOST POPULAR
BASIC SET! GET YOURS TODAY.**

- Each Kit includes 37 Pieces:**
4 Studs each in length (24 Studs):
 3" - 4" - 5" - 6" - 7" - 8"
4 T-Nuts in sizes to fit your machine
4 Coupling Nuts
4 Flanged Nuts
1 UNITED Holder

**Plus
A FREE Chip T-Slot
Cleaner!**



BASIC SET NO.	TABLE SLOT	STUD SIZE	T-NUT PART NO.
UDB-940800	7/16	3/8-16	UDB-957002
UDB-940802	1/2	3/8-16	UDB-957003
UDB-940804	9/16	3/8-16	UDB-957004
UDB-940805	9/16	1/2-13	UDB-957005
UDB-940807	5/8	1/2-13	UDB-957006
UDB-940809	11/16	1/2-13	UDB-957007
UDB-940810	11/16	5/8-11	UDB-957008
UDB-940812	3/4	5/8-11	UDB-957009
UDB-940814	13/16	5/8-11	UDB-957010
UDB-940815	13/16	3/4-10	UDB-957011
UDB-940817	7/8	3/4-10	UDB-957012
UDB-940819	1"	3/4-10	UDB-957013
UDB-940820	1-1/16	3/4-10	UDB-957015

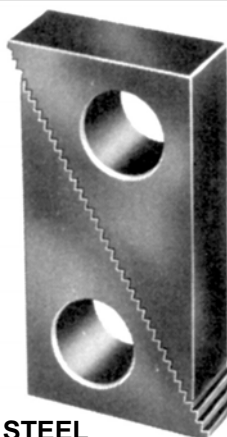


**Step Blocks
Clamp Straps Sets**

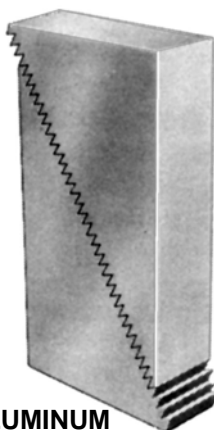
Step Blocks - Clamp Straps Plain/Step - Sets

STEP BLOCKS

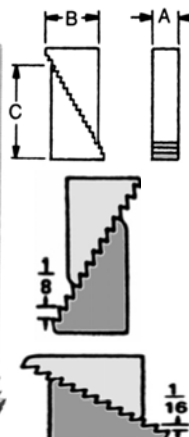
One Step Block is Two Mating Halves.



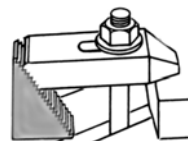
STEEL



ALUMINUM



Add 'A' to Part No. for Aluminum.



Steel is Heat Treated Black Oxide

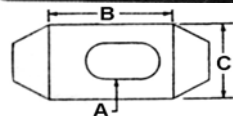
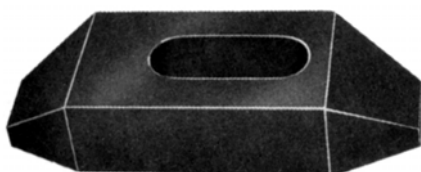
STEEL PART NO.	A WIDTH	B	C	HEIGHT RANGE
UDB-948960	1"	0.681	1.104	3/4 to 1-1/2
UDB-948962	1"	1.068	1.747	1-1/8 to 2-1/2
UDB-948964	1"	2.355	3.890	2-1/2 to 6"
UDB-948966	1-1/2"	1.454	2.390	1-3/4 to 3-3/4
UDB-948968	1-1/2"	2.355	3.890	2-1/2 to 6"
UDB-948970	1-1/2"	3.385	5.064	3-1/2 to 9"
UDB-948972	2"	1.454	2.390	1-3/4 to 3-3/4
UDB-948974	2"	2.355	3.890	2-1/2 to 6"
UDB-948976	2"	3.385	5.064	3-1/2 to 9"

STRAP CLAMPS

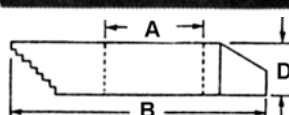
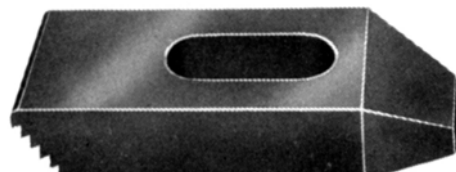
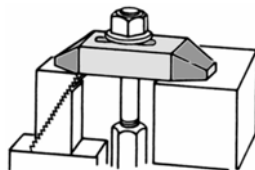
Serrations in Step Clamps match Serrations in Step Blocks.

Versatile — Easy to Use!

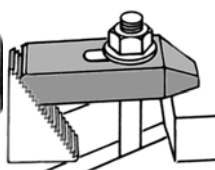
Steel is Heat Treated Black Oxide



PLAIN



STEP



PLAIN PART NO.	STEP PART NO.	A BOLT SIZE	B LENGTH	C WIDE	D THICK
UDB-948930	UDB-948900	5/16 or 3/8	2-1/2	1"	1/2
UDB-948932	UDB-948902	5/16 or 3/8	4"	1"	5/8
UDB-948934	UDB-948904	5/16 or 3/8	6"	1-1/8	3/4
UDB-948936	UDB-948906	1/2	2-1/2	1-1/8	1/2
UDB-948938	UDB-948908	1/2	4"	1-1/4	3/4
UDB-948940	UDB-948910	1/2	6"	1-1/4	7/8
UDB-948942	UDB-948912	5/8	2-1/2	1-1/4	5/8
UDB-948944	UDB-948914	5/8	4"	1-1/2	3/4
UDB-948946	UDB-948916	5/8	6"	1-1/2	7/8
UDB-948948	UDB-948918	3/4	4"	1-1/2	3/4
UDB-948950	UDB-948920	3/4	6"	1-1/2	1"
UDB-948952	UDB-948922	3/4	8"	1-3/4	1-1/8
UDB-948954	UDB-948924	7/8 or 1"	6"	2"	1-1/4
UDB-948956	UDB-948926	7/8 or 1"	8"	2"	1-3/8
UDB-948958	UDB-948928	7/8 or 1"	10"	2"	1-1/2

STEP BLOCK SETS

QUICK SET-UPS! Safe clamping is assured with UNITED STEP BLOCKS.

One Block is Two Mating Halves.



Aluminum or Steel

Steel Black Oxide

Aluminum Anodized Gray

STEEL SET NO.	ALUMINUM SET NO.	SET CONTENTS			
		QTY	WIDTH	CAPACITY	BLOCK HT.
UDB-837101	UDB-837101A	4 each:	1" wide	3/4 to 1-1/2	1-1/2
		4 each:	1" wide	1-1/8 to 2-1/2	1-3/4
		2 each:	1" wide	2-1/2 to 6"	3-7/8
UDB-837102	UDB-837102A	2 each:	1-1/2 wide	3/4 to 1-1/2	1-1/2
		2 each:	1-1/2 wide	1-1/8 to 2-1/2	1-3/4
		2 each:	1-1/2 wide	2-1/2 to 6"	3-7/8
UDB-837103	UDB-837103A	2 each:	2" wide	3/4 to 1-1/2	1-1/2
		2 each:	2" wide	1-1/8 to 2-1/2	1-3/4
		2 each:	2" wide	2-1/2 to 6"	3-7/8

Step Blocks and Serrated Clamps

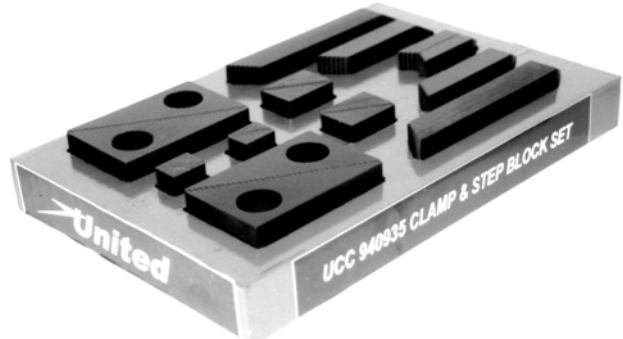
Clamp Block Sets

FOR USE WITH T-SLOT BOLTS, STUDS AND NUTS

ALL STEEL CLAMP BLOCK SETS

One Block consists of two Half Blocks. Use a single Block with Step Clamps. Use a pair of Blocks with plain Clamps. Serrated Blocks are used in pairs or individually.

Each milling machine requires a Step Block, Serrated Clamp Set and a Complete 53-Piece Set of Studs, T-Nut, Coupling Nut and Flange Nut to perform a wide variety of set ups and production.



Blocks are supports for Strap Clamp Step Block capacities of 3/4" to 9".

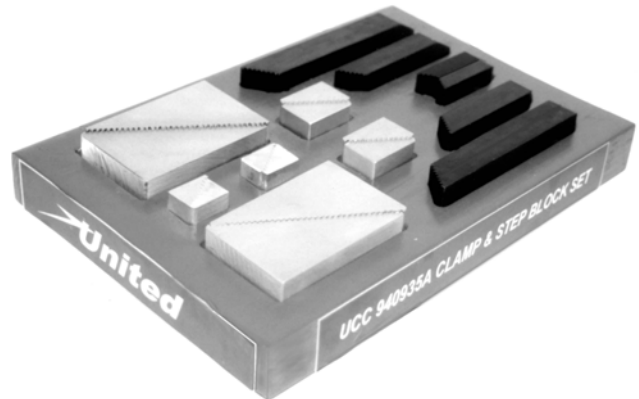
11L17 Steel Carburized — Hardened — Black Oxide Finish

STEEL STEP BLOCKS WITH STEEL CLAMP SETS									
SET PART NO.	BOLT SIZES	STEEL STEP CLAMPS			A SET CONSISTS OF 2 OF EACH.		STEEL STEP BLOCKS		CAPACITY OF FULL BLOCK
STEEL CLAMPS WITH STANDARD 1" WIDE STEEL BLOCKS									
UCC-940930	5/16 or 3/8	UDB-948900	UDB-948902	UDB-948904	UDB-948960	UDB-948962	UDB-948964	3/4 to 6"	
UCC-940935	1/2	UDB-948906	UDB-948908	UDB-948910	UDB-948960	UDB-948962	UDB-948964	3/4 to 6"	
UCC-940940	5/8	UDB-948912	UDB-948914	UDB-948916	UDB-948960	UDB-948962	UDB-948964	3/4 to 6"	
STEEL CLAMPS WITH HEAVY DUTY 1-1/2" WIDE STEEL BLOCKS									
UCC-940945	1/2	UDB-948906	UDB-948908	UDB-948910	UDB-948966A	UDB-948968A	UDB-948970A	1-1/2 to 9"	
UCC-940950	5/8	UDB-948912	UDB-948914	UDB-948916	UDB-948966A	UDB-948968A	UDB-948970A	1-1/2 to 9"	
UCC-940955	3/4	UDB-948916	UDB-948920	UDB-948922	UDB-948966A	UDB-948968A	UDB-948970A	1-1/2 to 9"	
STEEL CLAMPS WITH DOUBLE DUTY 2" WIDE STEEL BLOCKS									
UCC-940960	7/8 or 1"	UDB-948924	UDB-948926	UDB-948928	UDB-948972	UDB-948974	UDB-948976	1-1/2 to 9"	

ALUMINUM STEP BLOCKS and STEEL CLAMPS

Designed for use with T-Nut, Studs, T-Slot Bolts Sets

All Serrated Clamps and Step Block serrations must be fully engaged before servicing to prevent damage to work piece, Step Block or Clamp.



Step Block capacities of 3/4" to 9".

Anodized Aluminum Step Blocks

ALUMINUM STEP BLOCKS WITH STEEL CLAMP SETS								
SET PART NO.	BOLT SIZE	STEEL STEP CLAMPS			A SET CONSISTS OF 2 OF EACH.		ALUMINUM STEP BLOCKS	
1" WIDE STEEL CLAMPS WITH STANDARD ALUMINUM BLOCKS								
UCC-940930A	5/16 or 3/8	UDB-948900	UDB-948902	UDB-948904	UDB-948960A	UDB-948962A	UDB-948964A	
UCC-940935A	1/2	UDB-948906	UDB-948908	UDB-948910	UDB-948960A	UDB-948962A	UDB-948964A	
UCC-940940A	5/8	UDB-948912	UDB-948914	UDB-948916	UDB-948960A	UDB-948962A	UDB-948964A	
1-1/2" WIDE STEEL CLAMPS WITH HEAVY DUTY ALUMINUM BLOCKS								
UCC-940945A	1/2	UDB-948906	UDB-948908	UDB-948910	UDB-948966A	UDB-948968A	UDB-948970A	
UCC-940950A	5/8	UDB-948912	UDB-948914	UDB-948916	UDB-948966A	UDB-948968A	UDB-948970A	
UCC-940955A	3/4	UDB-948918	UDB-948920	UDB-948922	UDB-948966A	UDB-948968A	UDB-948970A	