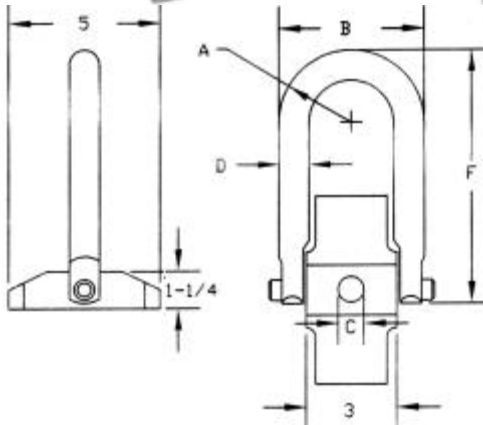


**Pivot Lifting Plates**

# Pivot Lifting Plates

4140 Certified Aircraft High Quality Heat Treated Steel Material



Lifting capacity rated from 7,000 to 10,000 pounds.

Safety Factor 5:1

Loads are distributed in rectangular base.

Use Grade 8 high strength screws and 1-1/2 minimum thread engagement thru screw.

**HIGH STRENGTH ALLOY SCREWS MUST BE USED FOR MAXIMUM LOADS.**

Large Bail Pivots 180°. This rugged tapered plate minimizes the shear force on high strength alloy screws.

Base Plate can be fastened or welded if you wish to eliminate screws.

Works for many original equipment applications.

Magnetic Particle Inspected.

Certified Heat Treated — Black Oxide per Mil Spec — Cadmium Plated available.

Let us assist you in customizing your specific requirements.

Call today.

UNITED PART NO.	RATED LOAD LBS.	A	B	C	D	F	THREAD SIZE	TORQUE FT/LBS.	REPLACEMENT SET OF BOLT, CLIPS & SCREW
UDB-944410	7000	1.40	4-13/16	3/4	6-1/2	4-13/16	3/4 10	100	UDB-944410-BCS
UDB-944610	7000	1.40	4-13/16	3/4	8-7/64	1-15/16	3/4 10	100	UDB-944610-BCS
UDB-944415	8000	1.40	4-13/16	7/8	6-1/2	3"	7/8 9	160	UDB-944415-BCS
UDB-944615	8000	1.40	4-13/16	7/8	8-7/64	3"	7/8 9	160	UDB-944615-BCS
UDB-944420	10000	1.40	4-13/16	1"	6-1/2	6-1/2	1 8	230	UDB-944420-BCS
UDB-944620	10000	1.40	4-13/16	1"	8-7/64	4-1/2	1 8	230	UDB-944620-BCS

# Metric Forged Swivel Hoist Rings

**Metric Forged Swivel Hoist Rings**

**METRIC**

**METRIC FORGED SWIVEL HOIST RINGS**

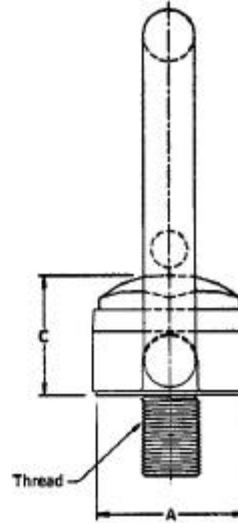
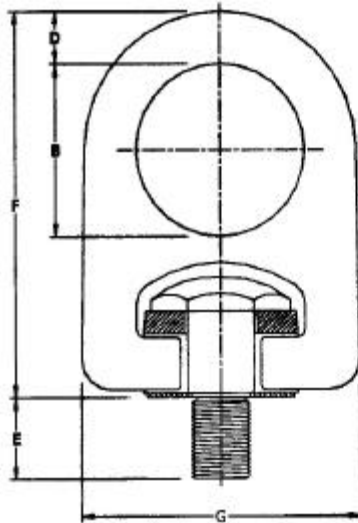
**MATERIAL:**  
Alloy Certified Aircraft Quality

**FINISH:**  
Phosphate per DOD-P-16232F  
(Cadmium Plated Available)

**SAFETY FACTOR:**  
5:1

**INSPECTION:**  
Magnetic Particle Inspected

**TREATMENT:**  
Certified Heat Treatment



**Swivels 360 degrees — Pivots 180 degrees**

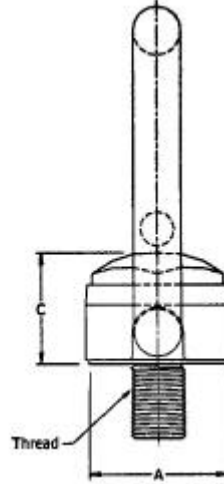
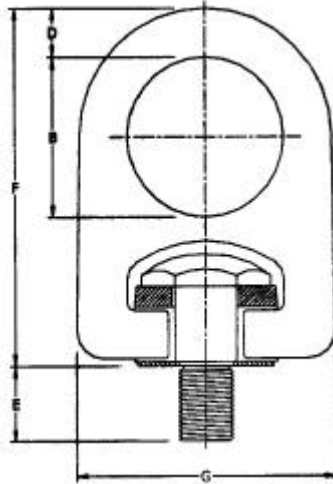
METRIC										
PART NO.	RATED LOAD	THREAD SIZE	A	B	C	D	E (MM)	F	G	TORQUE (Kgm)
UDB-956912	400	M8 x 1.25	1.23	1.40	1.16	0.44	15	3.29	2.38	0.86
UDB-956914	400	M8 x 1.25	1.23	1.40	1.16	0.44	20	3.29	2.38	0.86
UDB-956916	500	M10 x 1.50	1.23	1.40	1.16	0.44	15	3.29	2.38	1.5
UDB-956918	500	M10 x 1.50	1.23	1.40	1.16	0.44	25	3.29	2.38	1.5
UDB-956924	1,050	M12 x 1.75	2.10	2.40	1.97	0.75	25	5.60	4.05	3.7
UDB-956926	1,050	M12 x 1.75	2.10	2.40	1.97	0.75	35	5.60	4.05	3.7
UDB-956930	1,900	M16 x 2.00	2.10	2.40	1.97	0.75	25	5.60	4.05	8.4
UDB-956932	1,900	M16 x 2.00	2.10	2.40	1.97	0.75	35	5.60	4.05	8.4
UDB-956936	2,150	M20 x 2.50	2.10	2.40	1.97	0.75	25	5.60	4.05	14
UDB-956938	2,150	M20 x 2.50	2.10	2.40	1.97	0.75	40	5.60	4.05	14
UDB-956942	3,000	M20 x 2.50	2.80	3.20	2.62	1.00	30	7.48	5.40	14
UDB-956926	4,200	M24 x 3.00	2.80	3.20	2.62	1.00	30	7.48	5.40	34
UDB-956948	4,200	M24 x 3.00	2.80	3.20	2.62	1.00	40	7.48	5.40	34
UDB-956949	4,200	M30 x 3.50	2.80	3.20	2.62	1.00	40	7.48	5.40	60
UDB-956950	4,200	M30 x 3.50	2.80	3.20	2.62	1.00	50	7.48	5.40	60
UDB-956956	7,000	M30 x 3.50	3.50	4.00	3.28	1.25	50	9.35	6.75	60
UDB-956960	7,000	M33 x 3.50	3.50	4.00	3.28	1.25	55	9.35	6.75	80
UDB-956966	11,000	M36 x 4.00	3.50	4.00	3.28	1.25	65	9.35	6.75	100
UDB-956968	12,500	M42 x 4.50	3.50	4.00	3.28	1.25	85	9.35	6.75	100
UDB-956970	13,500	M48 x 5.00	3.50	4.00	3.28	1.25	85	9.35	6.75	100

# Forged Swivel Hoist Rings

# Forged Swivel Hoist Rings

## FORGED SWIVEL HOIST RINGS

## STANDARD



**MATERIAL:**  
Alloy Certified Aircraft Quality

**FINISH:**  
Phosphate per DOD-P-16232F  
(Cadmium Plated Available)

**SAFETY FACTOR:**  
5:1

**INSPECTION:**  
Magnetic Particle Inspected

**TREATMENT:**  
Certified Heat Treatment

Swivels 360 degrees — Pivots 180 degrees

### STANDARD

PART NO.	RATED LOAD	THREAD SIZE	A	B	C	D	E	F	G	TORQUE Ft / Lbs
UDB-956100	600	1/4-20	1.23	1.40	1.16	0.44	0.50	3.29	2.38	5
UDB-956102	800	5/16-18	1.23	1.40	1.16	0.44	0.50	3.29	2.38	7
UDB-956104	800	5/16-18	1.23	1.40	1.16	0.44	1.00	3.29	2.38	7
UDB-956106	1,000	3/8-16	1.23	1.40	1.16	0.44	0.50	3.29	2.38	12
UDB-956107	1,000	3/8-16	1.23	1.40	1.16	0.44	1.00	3.29	2.38	12
UDB-956008	2,500	1/2-13	2.10	2.40	1.97	0.75	0.75	5.60	4.05	28
UDB-956010	2,500	1/2-13	2.10	2.40	1.97	0.75	1.00	5.60	4.05	28
UDB-956012	2,500	1/2-13	2.10	2.40	1.97	0.75	1.25	5.60	4.05	28
UDB-956002	4,000	5/8-11	2.10	2.40	1.97	0.75	0.75	5.60	4.05	60
UDB-956004	4,000	5/8-11	2.10	2.40	1.97	0.75	1.00	5.60	4.05	60
UDB-956006	4,000	5/8-11	2.10	2.40	1.97	0.75	1.25	5.60	4.05	60
UDB-956014	5,000	3/4-10	2.10	2.40	1.97	0.75	1.00	5.60	4.05	100
UDB-956018	5,000	3/4-10	2.10	2.40	1.97	0.75	1.50	5.60	4.05	100
UDB-956204	7,000	3/4-10	2.80	3.20	2.62	1.00	1.00	7.48	5.40	100
UDB-956203	7,000	3/4-10	2.80	3.20	2.62	1.00	1.25	7.48	5.40	100
UDB-956206	7,000	3/4-10	2.80	3.20	2.62	1.00	1.50	7.48	5.40	100
UDB-956202	8,000	7/8-9	2.80	3.20	2.62	1.00	1.50	7.48	5.40	160
UDB-956205	8,000	7/8-9	2.80	3.20	2.62	1.00	1.25	7.48	5.40	160
UDB-956210	10,000	1" -8	2.80	3.20	2.62	1.00	1.25	7.48	5.40	230
UDB-956212	10,000	1" -8	2.80	3.20	2.62	1.00	1.50	7.48	5.40	230
UDB-956214	10,000	1" -8	2.80	3.20	2.62	1.00	2.25	7.48	5.40	230
UDB-956802	15,000	1-1/4-7	3.50	3.50	4.00	3.28	2.00	9.35	6.75	470
UDB-956804	15,000	1-1/4-7	3.50	3.50	4.00	3.28	2.75	9.35	6.75	470
UDB-956702	20,000	1-3/8-6	3.50	3.50	4.00	3.28	2.75	9.35	6.75	540
UDB-956404	24,000	1-1/2-6	3.50	3.50	4.00	3.28	2.75	9.35	6.75	800
UDB-956400	30,000	2" -4-1/2	3.50	3.50	4.00	3.28	3.00	9.35	6.75	800

# UNITED Street Plate Lifting System®



## STREET PLATE LIFTING RINGS

**UNITED Street Plate Lifting Rings enable the fastest and safest handling of heavy steel plates commonly used to cover trenches and excavations in streets and roadways to facilitate traffic flow during construction or repair. Used by Utility and Construction Companies.**



**Swivels  
360°**

**Pivots  
180°**

PATENT #6,161,883 & 6,161,884

**SAFETY FACTOR: 5:1**

**MATERIAL:  
Alloy Material**

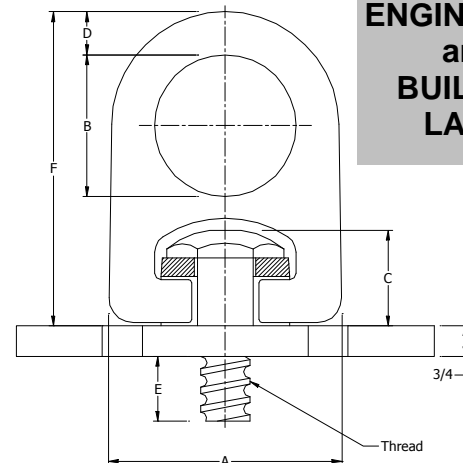
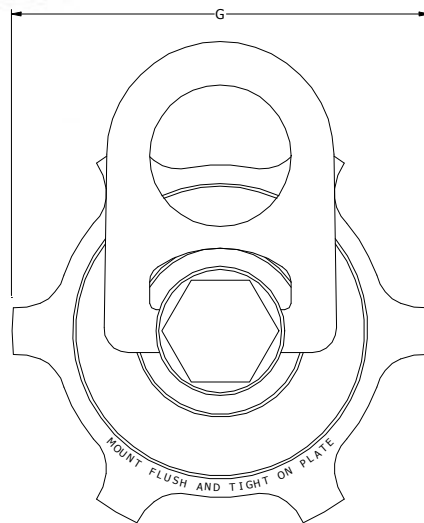
**FINISH:  
Phosphate per DOD-P-16232F**

**Magnetic Particle Inspected**

**Certified Heat Treatment**

**200% Proof-Load Tested**

**Other Sizes Available**



**SAFETY  
ENGINEERED  
and  
BUILT TO  
LAST!**

**Forged Hoist Ring Kits  
Available in most sizes.  
Please call UNITED.**

**No tools required with Weld-In Nut!  
Please see Page K12 for Plate Nuts and Accessories.**



Part No.	Rated Load (lbs)	A	B	C	D	E	F	G	Thread Type	Thread Size	Torque Ft/Lbs
UDB-938215	10,000	5.40	3.20	2.62	1	1	7.48	7	Coil	1-1/4	230
UDB-938225	10,000	5.40	3.20	2.62	1	1-1/2	7.48	7	Coil	1-1/2	470
UDB-938865	15,000	6.75	4	3.28	1-1/4	1	9.35	9	Coil	1-1/4	230
UDB-938875	15,000	6.75	4	3.28	1-1/4	1-1/2	9.35	9	Coil	1-1/2	470

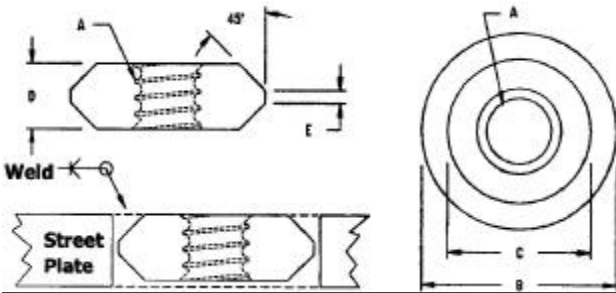
# Street Plate Rings and Nuts

# Street Plate Lifting Rings & Nuts

## STREET PLATE NUTS



- Material: Alloy Material
- Finish: Phosphate per DOD-P-16232F
- Magnetic Particle Inspected
- Certified Heat Treatment
- Welding Rod-Alloy #7018

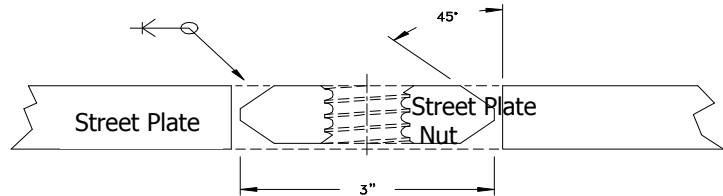


Part No.	Thread Type	Thread Size (A)	B	C	D
UDB-848801	Coil	1"-3.5	3	2-1/8	3/4
UDB-848802	Coil	1"-3.5	"	"	7/8
UDB-848803	Coil	1"-3.5	"	"	1
UDB-848812	Coil	1-1/4"-3.5	"	"	3/4
UDB-848815	Coil	1-1/4"-3.5	"	"	7/8
UDB-848822	Coil	1-1/4"-3.5	"	"	7/8
UDB-848816	Coil	1-1/4"-3.5	"	"	1-1/4
UDB-848817	Coil	1-1/4"-3.5	"	"	1-1/2
UDB-848804	Coil	1-1/2"-3.5	3-1/2	2-3/8	1
UDB-848806	Coil	1-1/2"-3.5	"	"	1-1/4
UDB-848856	Coil	1-1/2"-3.5	"	"	1-1/2

## WELDING INSTRUCTION

- Street Plate Nut should have 1/8" clearance to trench plate (1/16" on each side).
- You may replace an old nut if all previous weld metal is removed.
- Use *UNITED* Welding Fixture to make sure threaded plate is flush and square with top surface of trench plate.
- Preheat the 12" to 14" diameter section of the plate around the hole to 450°-700°F. Do not preheat the nut.
- Weld using Lincoln Jet Weld #ED010558 LH 70 - E7018 or 7024 - 3/16 dia. rod or equivalent.
- Back-gouge root to sound metal.
- Weld second side.
- Grind weld on top surface flush.

\*NOTE: After the nut has been welded to the plate, surfaces of the weld must be ground to the same surface level as the trench plate. This procedure allows the hoist ring to sit flush against the trench plate surface. Not doing so will cause the hoist ring not to sit properly and will lead to usage failure.

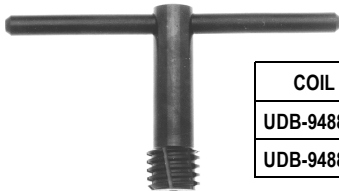


## COIL THREADED ROD

- Used with nut for making special Coil, Acme, or UNC Bolts. 170,000 psi
- Available in any length up to 12' (4.0m) RC 38-42 Alloy Steel.

COIL	DIAMETER
UDB-948330	1/2 13mm
UDB-948340	3/4 19mm
UDB-948350	1" 25mm
UDB-948360	1-1/4 32mm
UDB-948370	1-1/2 38mm

## THREAD CLEAN-OUT TOOL



COIL	DIAMETER
UDB-948842	1-1/4
UDB-948843	1-1/2

Used to clean out dirt or other foreign matter

## WELDING FIXTURE



COIL	DIAMETER	LEG LEN.
UDB-948960	1-1/4	4-1/2"
UDB-948960-L	1-1/4 LONG	13"
UDB-948963	1-1/2	4-1/2"
UDB-948963-L	1-1/2 LONG	13"

Used to hold the nut in place (flush and perpendicular to the street plate surface) to ease in the tacking of the nut.

## GO/NO GO GAUGE



COIL	DIAMETER
UDB-948956	1-1/4
UDB-948954	1-1/2

Used to determine when street plate nuts and studs need to be replaced.

## WELDABLE PLATES



PART NO.	LENGTH	WIDTH	THICKNESS
UDB-948982A	12"	6"	1"

PART NO.	PLATE DIA.	I.D. DIA.	THICKNESS
UDB-948980	6-1/2"	3-1/8"	1"
UDB-948985	11"	3-1/8"	1"

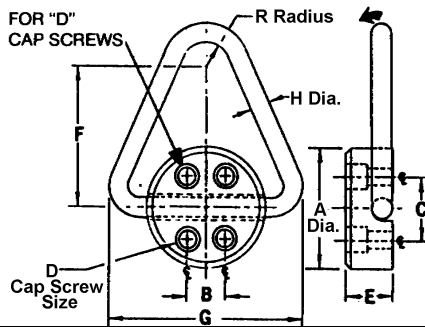
Used to replace the center section of street plates from prior usage (i.e. holes, slots, etc.) Eliminates the need to change the entire plate.

# Maximum Safety

## Hoist Rings and Swivel Snaps

### LOW PROFILE HOIST RINGS

For proficient handling of tools. Provides maximum load capacity regardless of pull direction. Rings store flat using minimum space. Pivots 180° with two or four mounting holes. Does not swivel. Economical solid loop.

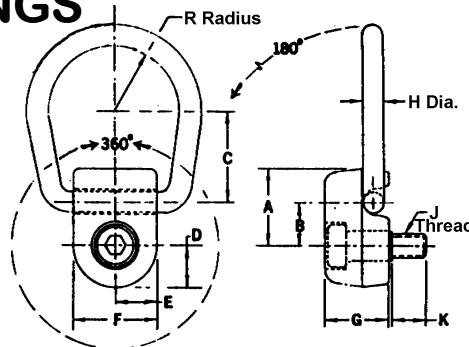


UNITED PART NO.	SAFE LOAD in Lbs.	A	B	C	CAP SCREW D	E	F	G	H	R	No. of MOUNT HOLES
UDB-20-HR	1600	1-3/4	-	1	5/16	3/4	2	2-1/2	5/16	1/2	2
UDB-25-HR	2000	2-1/4	-	1-1/8	3/8	7/8	2-1/2	3-3/16	3/8	5/8	2
UDB-50-HR	4000	2-5/8	-	1-1/2	1/2	1-1/8	3	3-7/8	1/2	3/4	2
UDB-120-HR	9600	3-1/8	1-1/4	1-5/8	1/2	1-3/8	4	5	3/4	7/8	4
UDB-200-HR	16000	3-5/8	1-1/4	2-1/16	5/8	1-7/8	5	6-3/16	1	1	4

4130 Black MIL-C-13924A Forged Assembly Magnafluxed See Page K3 for Hoist Ring Clips.

### SIDE PULL HOIST RINGS

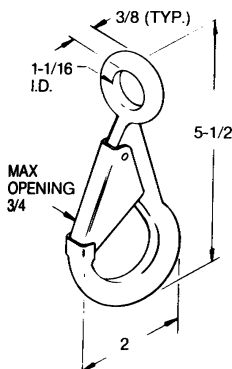
Rotates 360° and pivots 180° without unhooking. The large diameter solid construction ring allows use of most types of hooks. Base Block rotates in the direction of the applied load.



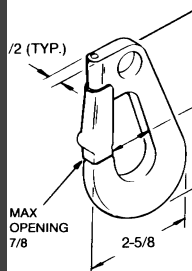
UNITED PART NO.	SAFE LOAD in Lbs.	A	B	C	CAP SCREW D	E	F	G	DIA. H	THD. J	K	R	INSTALLATION TORQUE FT-LBS.	REPLACEMENT SHOULDER SCREW
UDB-10-SHR	1000	1-1/8	5/8	1-1/2	5/8	5/8	1-1/4	13/16	5/16	3/8-16	5/8	13/16	7-10	UDB-10-SHRB
UDB-25-SHR	2500	1-5/8	7/8	1-7/8	7/8	7/8	1-3/4	1-1/4	7/16	5/8-11	7/8	1-1/8	42-50	UDB-25-SHRB
UDB-50-SHR	5000	2-3/16	1-1/8	2-3/4	1	1	2	1-11/16	5/8	3/4-10	1	1-3/8	70-80	UDB-50-SHRB
UDB-10M-SHR	1000	1-1/8	5/8	1-1/2	5/8	5/8	1-1/4	13/16	5/16	M10	.59	13/16	7-10	UDB-10M-SHRB
UDB-25M-SHR	2500	1-5/8	7/8	1-7/8	7/8	7/8	1-3/4	1-1/4	7/16	M16	.79	1-1/8	42-50	UDB-25M-SHRB
UDB-50M-SHR	5000	2-3/16	1-1/8	2-3/4	1	1	2	1-11/16	5/8	M20	.98	1-3/8	70-80	UDB-50M-SHRB

### SWIVEL SNAPS

BALANCED SNAP UDB-732104



TOUGH SNAP UDB-732102



SWIVEL SNAP UDB-732103

